

COMBINATION SEED DRILLS

Flexible Drilling Options





THE BUILD QUALITY, DURABILITY AND ENVIRONMENTAL CREDENTIALS OF ALPEGO MACHINERY IS SECOND TO NONE

The ALPEGO INSIDE label on every machine is a mark of quality, representing attention to detail at every stage of manufacturing. To produce each machine the highest quality materials are combined with certified welding and production processes.

The factory utilises modern, state-of-the-art machinery and a sustainable painting process to minimise the environmental impact of manufacturing. ALPEGO INSIDE ensures exceptional performance and durability.



HIGHEST QUALITY STEEL

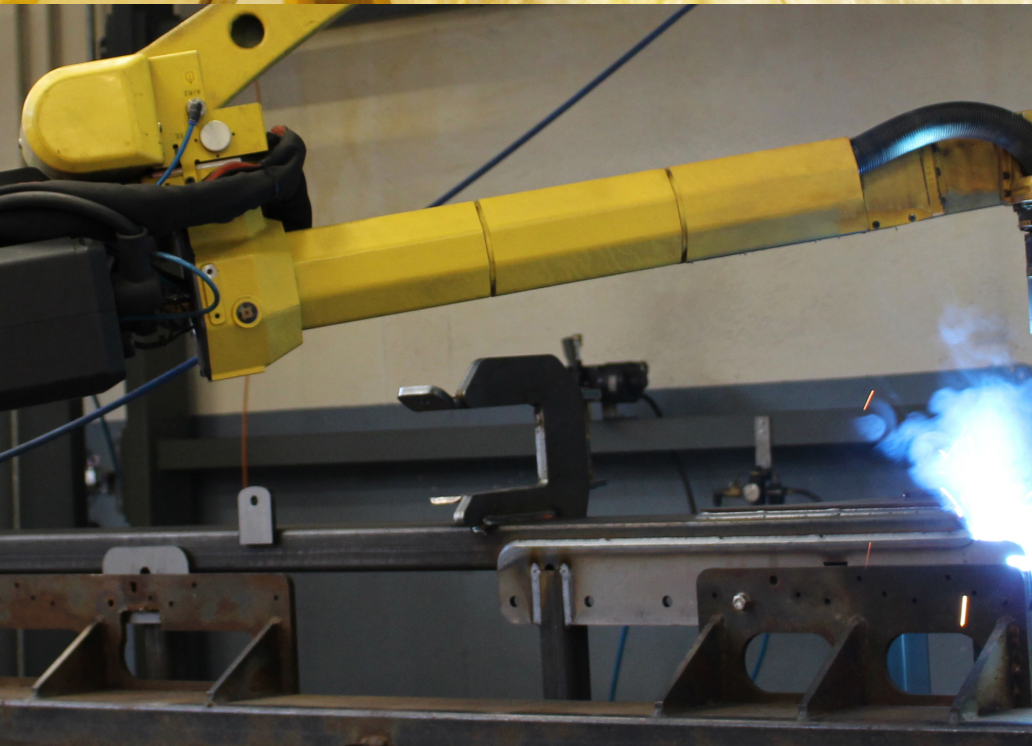
All Alpego machines are built with the highest quality steel to provide strength and reduce weight whilst maintaining the required operational performance. This reduces running costs, ensures longevity and ultimately improves environmental sustainability of all Alpego products.



ECO PAINTING

The only system of its kind throughout Europe, the Alpego paint system allows components to be painted with either a powder or water based process, depending on which best suits its application.

Both processes use the most up-to-date technology and zero emissions materials.



CERTIFIED WELDING

Both manual and robotic welding at Alpego are certified by the Italian National Welding Institute, combined with consistent quality control processes this ensures exceptional durability of components and the finished machines.

A simple or customised seed drill for your farm

Work rates, accuracy and simplicity to meet your needs

The Jet M pneumatic seed drill is designed for ease-of-use and maximum versatility. It is compatible with Alpego BG, RMT or RTEK power harrows and suitable for working in combination with tractors from 85 to 250hp.

JET-M

REAR MOUNTED COMBINATION DRILL

EFFICIENT inside

85-250hp
Page 14



355MM BORON STEEL SINGLE DISC COULTERS WITH ANTI-BLOCK FLAP

- Twin bearings
- 60kg coulters pressure
- Rubber shock protecting mounts
- 43cm coulters stagger

RDS SUPER-PLUS CONTROL BOX AND GPS SPEED SENSOR

- Manages seeding operation and tramlines
- Pre start metering function
- Monitors fan, metering roller and seed level

ISOBUS OPTION

Control of all the functions using the tractor screen

STAINLESS STEEL AIRON ELECTRONIC METERING UNIT WITH 3 ROLLERS

- Seed rates from 2-350kg/ha

- 1000 litre hopper
- Hydraulic drive fan
- Manual half width shut off
- 2+2 tramlines

Alpego design and manufacture a wide range of seed drill options from the Jet M and Jet X rear mounted combinations to the ASPRO and ASMAX front and rear combination drills. The range spans simple 3m solutions to customised 8m wide units for the highest of work rates. It also includes innovative design features to improve accuracy and make the drills simple for the operator to use.

The Jet X pneumatic seed drill is designed for professional use and suitable for drilling all seed types in the most demanding conditions. It is compatible with Alpego RTEK and RMAX power harrows and suitable for working in combination with tractors from 120 to 320hp.

JET-X

REAR MOUNTED COMBINATION DRILL

PROGRESS inside

120-320hp
Page 16



355MM STEEL BORON SINGLE DISC COULTERS WITH ANTI-BLOCK FLAP

- Twin bearings
- 60kg coulters pressure
- Rubber shock protecting mounts
- 43cm coulters stagger

"AUTO LEVEL" QUICK ATTACH TO POWER HARROW

- Coulters bar or complete drill can be demounted in 15 minutes

FULL ISOBUS DRILL MANAGEMENT USING THE TRACTOR SCREEN

STAINLESS STEEL DOSAL ELECTRONIC METERING UNIT CAPABLE OF 2 TO 450KG/HA

- Single segmented roller for large and small seeds

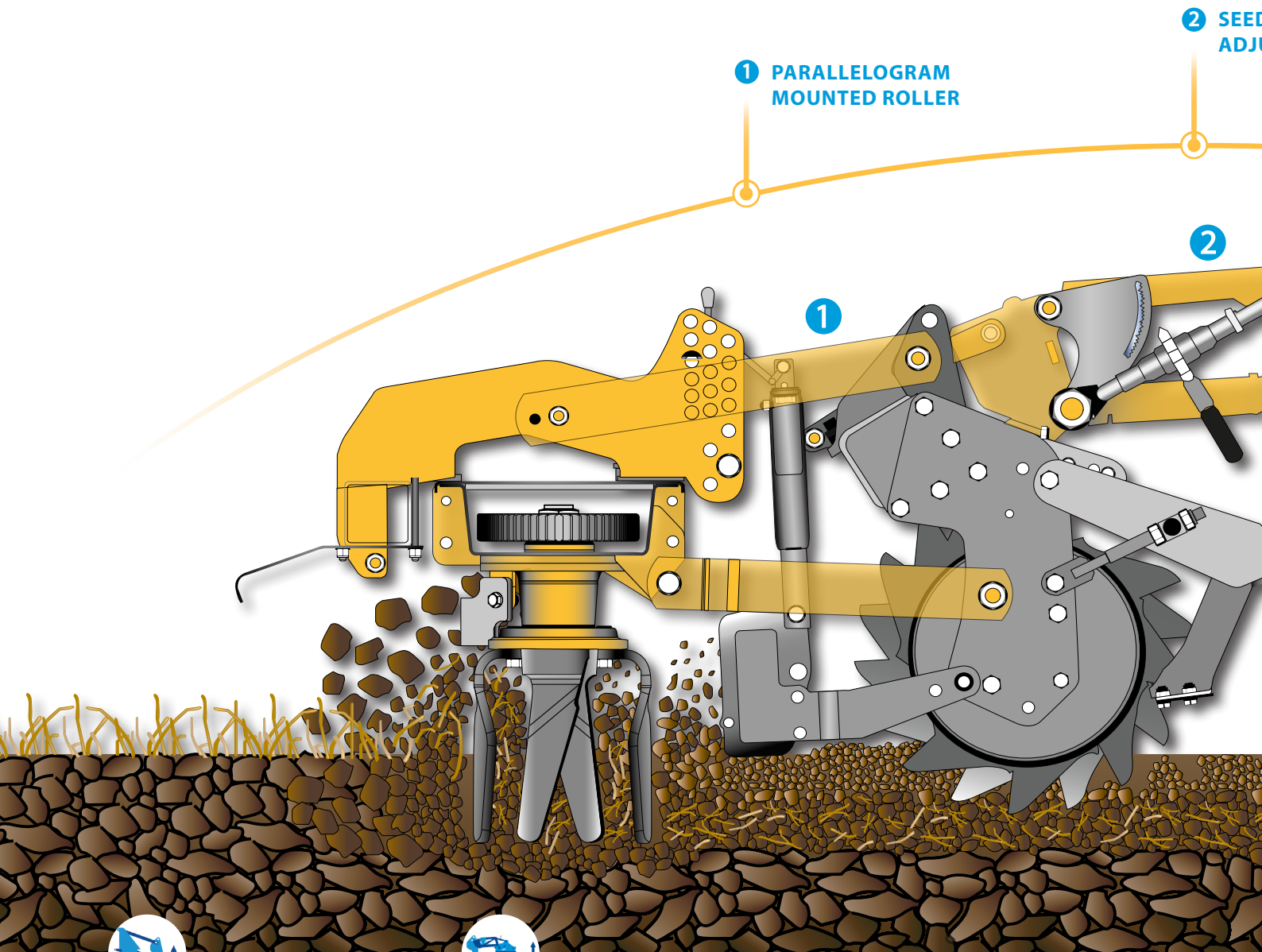
TURBO ROTAL IMPELLER IN DISTRIBUTION HEAD

- Precise, even seed distribution

- Extendable 1500 litre hopper
- Hydraulic drive fan
- Electric half width shut off
- 2+2 tramlines

Seed bed preparation and seeding

A coulters bar for all conditions



1 PARALLELOGRAM MOUNTED ROLLER

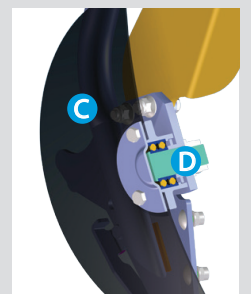
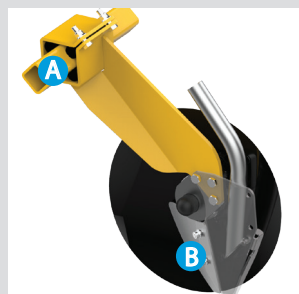
Alpego use a parallelogram linkage between the power harrow and packer roller. This ensures the angle of the frame that the drill is mounted on stays the same. This allows the power harrow depth to be adjusted without affecting the coulters pressure or depth.



2 SEEDING BAR ADJUSTMENT

There is also a parallelogram linkage to adjust the coulters depth, this ensures the coulters bar stays parallel to the ground and therefore the front and rear coulters depth pressure is the same.

3 DISC COULTERS



PLOUGHED SOIL



WET SOIL



SOIL WITH CROP RESIDUES



STONY SOIL

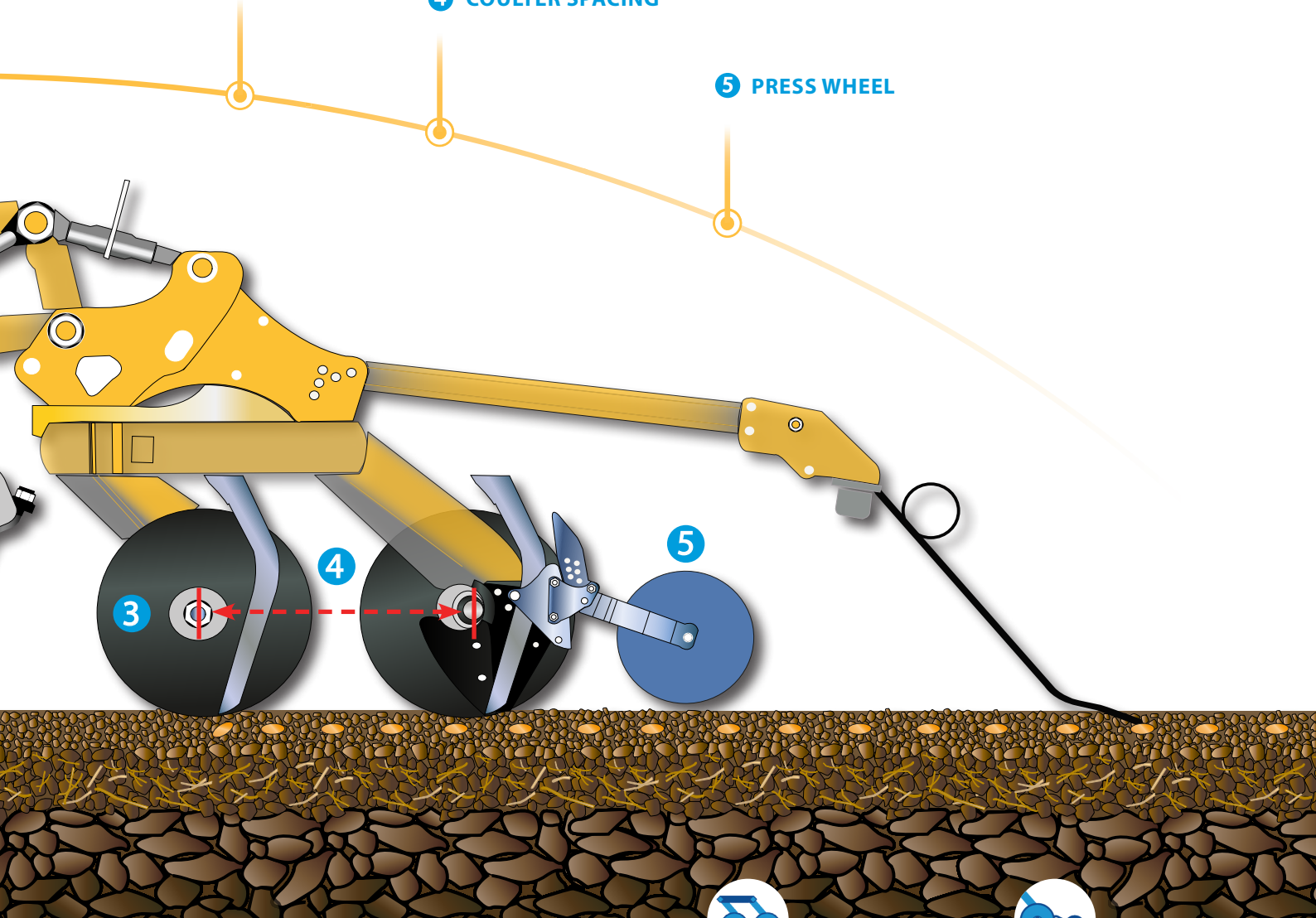


**DRIVING BAR
ADJUSTMENT**

3 DISC COULTERS

4 COULTER SPACING

5 PRESS WHEEL



A - RUBBER SHOCK ABSORBER: Discs are mounted on a rubber shock absorbing clamp that allows up to 60kg of coulters pressure

B - SEED FLAP: A seed flap behind the coulters tube prevents blockage in wet conditions

C - BORON DISC: 355mm Boron steel discs provide consistent penetration and longevity

D - DOUBLE ROLLER BEARING: Alpego disc coulters are mounted on two roller bearings for reliable work in tough conditions



4 COULTER SPACING

There is 43cm clearance between the two rows of coulters which ensures crop residues and soil flows through the discs even in sticky wet conditions.

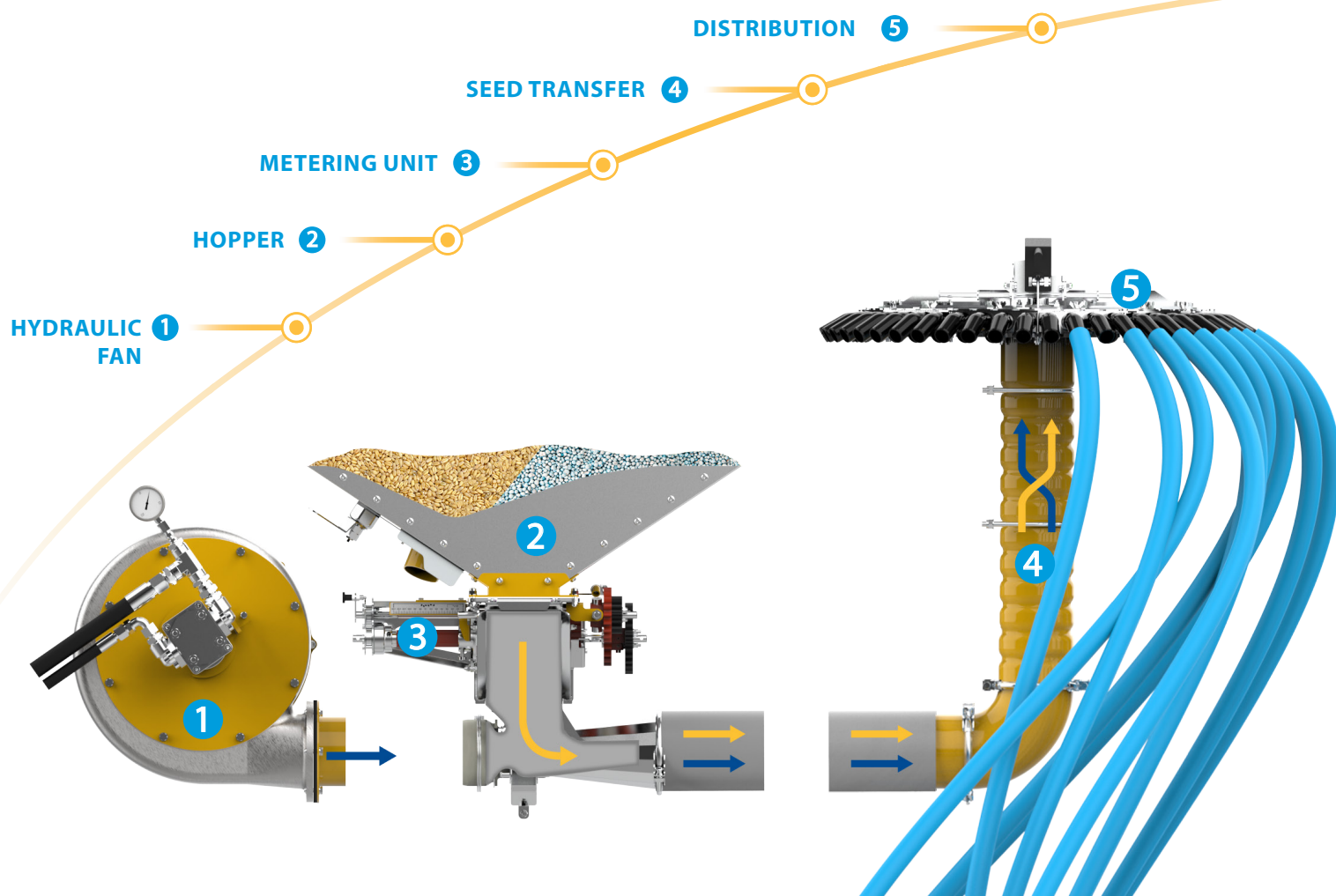


5 PRESS WHEEL

An optional rubber press wheel is available to help maintain consistent depth when drilling shallow.

Metering and distribution system

Precision for an even application



1

HYDRAULIC FAN

Alpego hydraulic fans use are high performance but require relatively low oil flow. Drills can therefore be operated on most tractors.

2

HOPPER

Alpego hoppers are designed for close coupling to the tractor to reduce lift requirement and are easily accessible for loading.

3

METERING UNIT

There is a choice of two different metering units on Alpego drills allowing seed or fertiliser rates of 2-350kg/ha to be achieved.

4

SEED TRANSFER

Alpego transfer pipework is designed to reduce friction and wear and keep back pressure to a minimum ensuring consistent seed delivery.

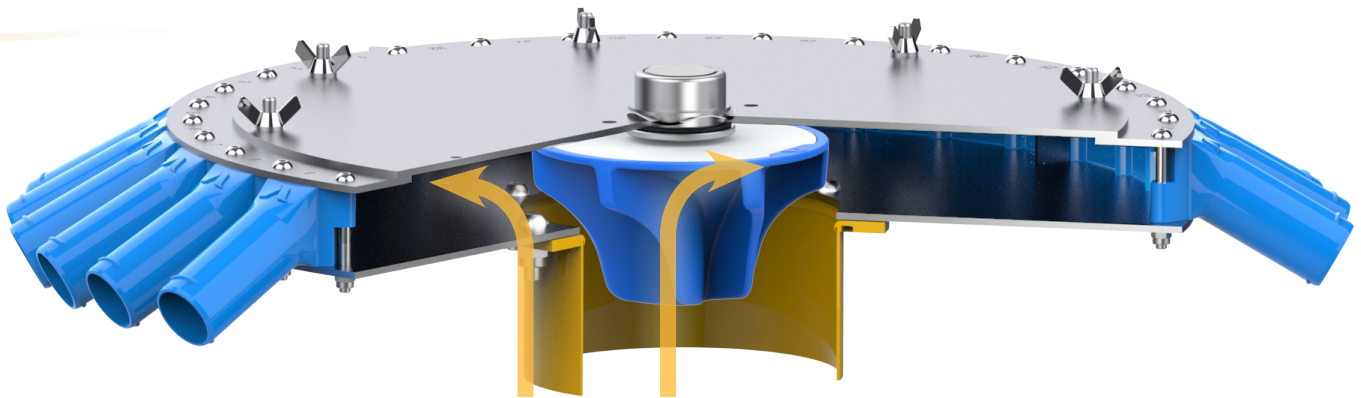
5

DISTRIBUTION

A variety of distribution heads with 6-48 outlets are available to meet any need and guarantee optimal seed distribution down each pipe.

TURBO ROTAL

Even distribution for uniform application

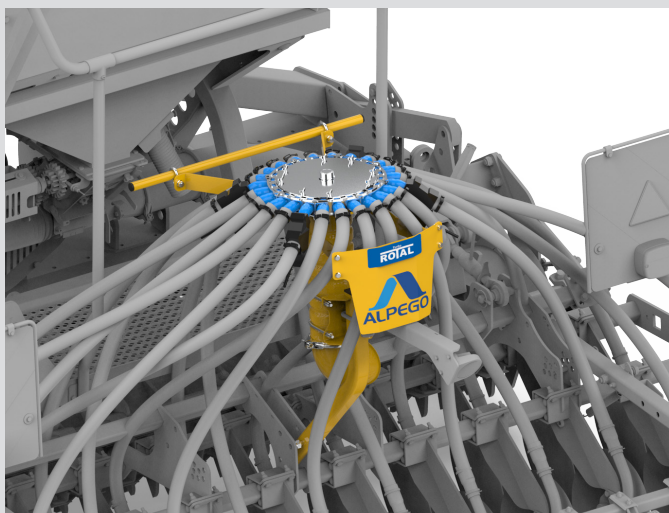


TURBO ROTAL (JET-X ONLY)

The Turbo Rotal system is an innovative solution for an issue that affects all drills especially when using long seed pipes at wider working widths. It consists of a spinning impeller located in the centre of the distribution head that promotes more uniform distribution of the seed to the individual outlets.

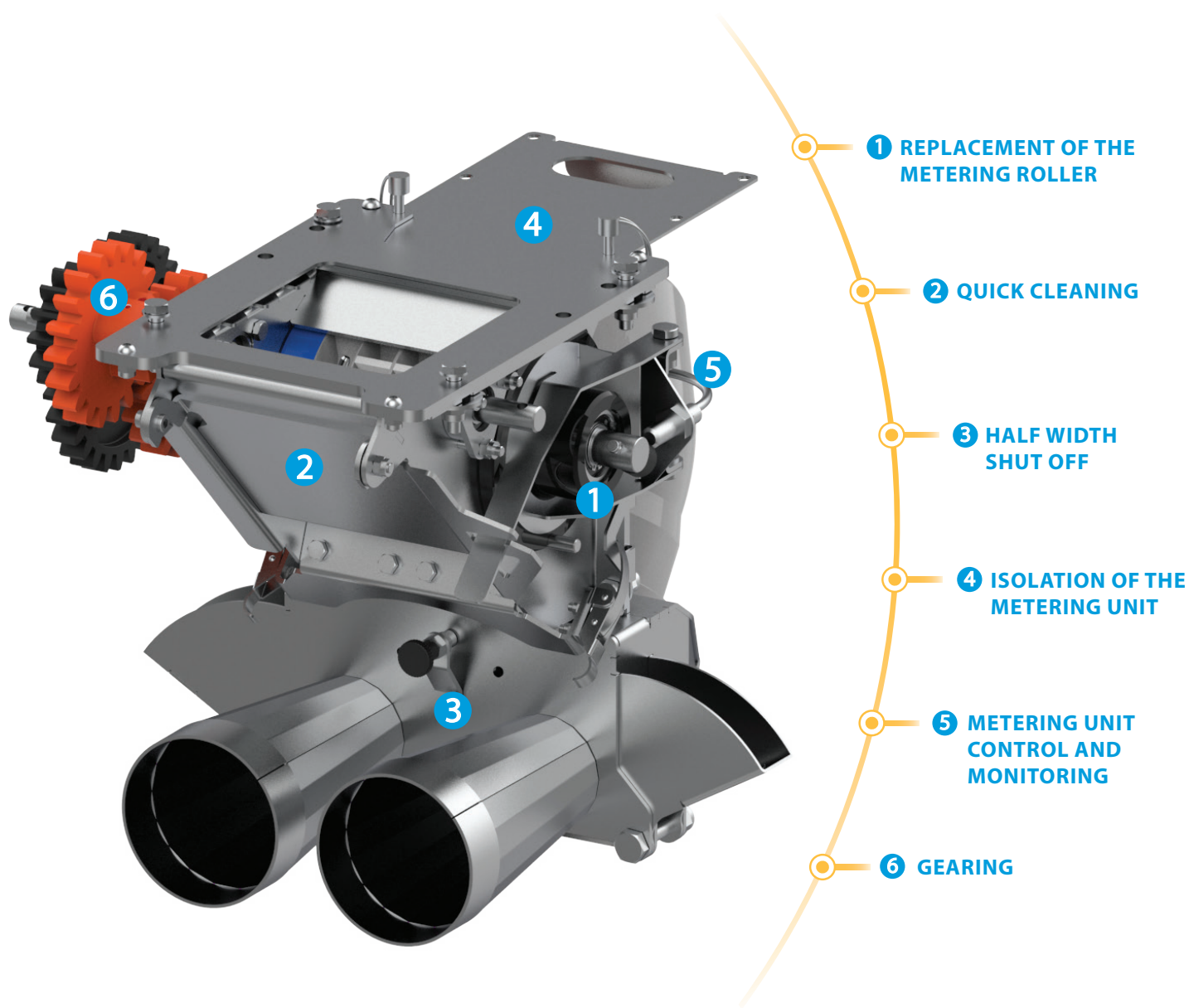
This improves the consistency of seed volume delivered to each outlet by 50% which, coupled with Alpego attention to detail throughout the other elements of the metering and distribution, provides market leading accuracy.

Seed flow in standard distribution heads will favour shorter pipes with less back pressure and the "downhill pipes" when working on slopes. The Turbo Rotal system prevents or reduces this bias ensuring even distribution.



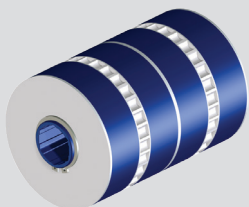
AIRON

Precise gentle metering for small and large seeds

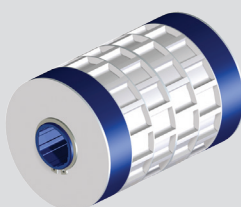


COMMONLY USED STANDARD METERING ROLLERS:

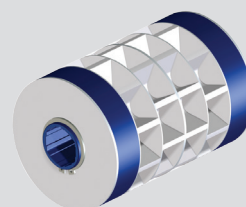
METERING ROLLER 11.5 cm³



METERING ROLLER 110 cm³

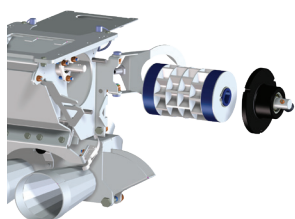


METERING ROLLER 392 cm³



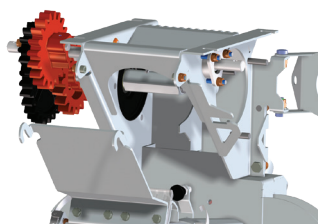
IO * For additional Alpego metering rollers contact OPICO

The AIRON metering unit has been designed to provide simplicity and ease of use from the calibration test, through to cleaning out when drilling is finished. It utilises interchangeable metering rollers as well as adjustable gears to allow metering of various seed types and fertiliser. It also features simple manual half side shut off.



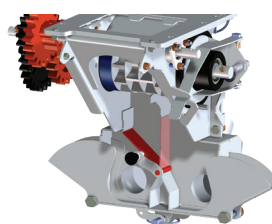
1
REPLACEMENT OF THE METERING ROLLER

The metering roller can be changed by simply sliding one out and replacing it, no tools are required.



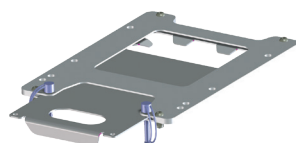
2
QUICK CLEANING

There is a rear flap which can be opened to empty and clean out the metering unit.



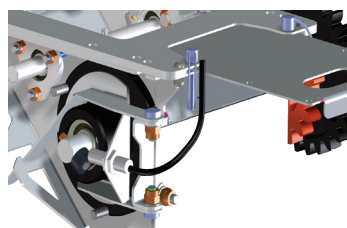
3
HALF WIDTH SHUT OFF

Left or right hand half width shut off as standard.



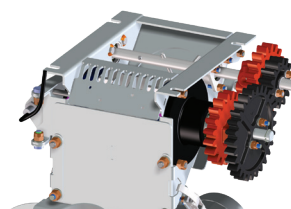
4
ISOLATION OF THE METERING UNIT

A guillotine slide at the base of the hopper allows the metering unit to be isolated to change the seed roller.



5
METERING UNIT CONTROL AND MONITORING

There is a sensor to prevent the unit being operated when the calibration door is open.

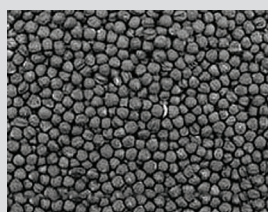


6
GEARING

Different gears can be selected in addition to the metering roller replacement, this allows maximum seed rate range and precision.

AIRON CAN BE USED FOR:

RAPESEED



BARLEY



WHEAT



PEAS



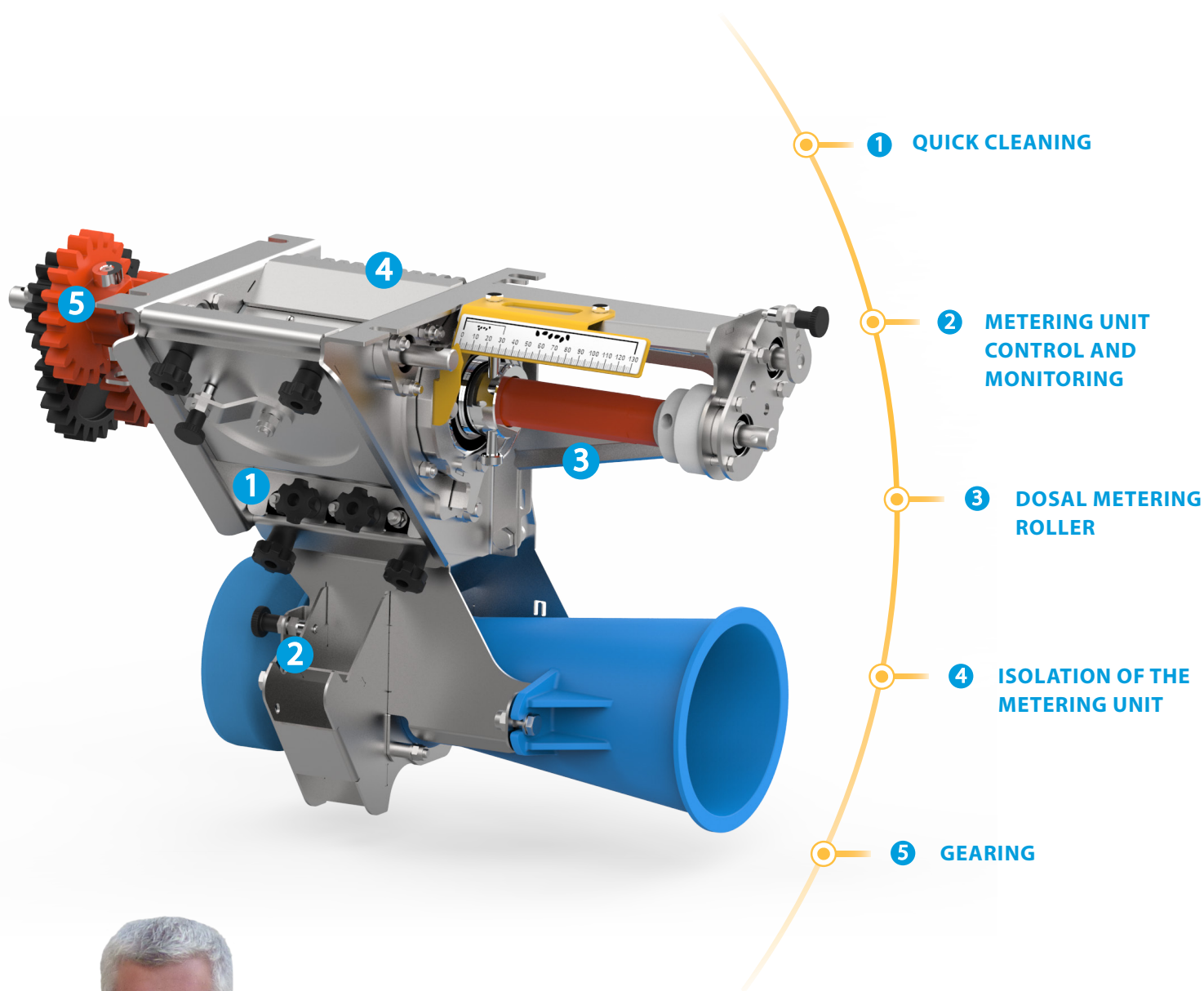
FERTILISER



AIRON

DOSAL

Accurate high capacity metering.
Stainless steel metering unit suitable for large and small seeds and fertiliser

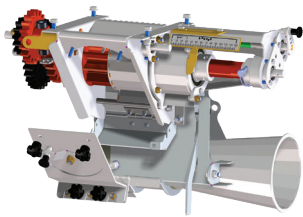


After years of using plastic metering units, we have understood the weak points and, thanks to all the studies and designs we have made, we have created our own Alpego stainless steel metering unit to guarantee maximum performance for our customers and our machines.



*David Finetti
Chief Sales Officer Alpego France*

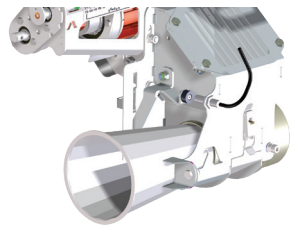
The flexible DOSAL metering unit is designed for maximum volumes alongside precision for small seeds. It utilises an adjustable metering roller and adjustable gears to achieve unbeatable accuracy with small and large seeds as well as fertiliser.



1

QUICK CLEANING

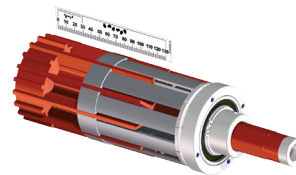
Metering unit can be emptied and cleaned out via the rear opening flap.



2

METERING UNIT CONTROL AND MONITORING

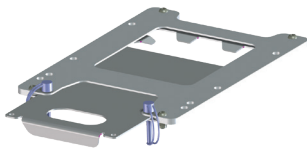
There is a sensor to prevent the unit being operated when the calibration door is open.



3

DOSAL METERING ROLLER

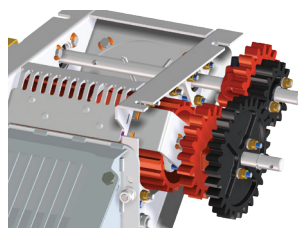
Designed for high performance and offers a wide seed rate range for multiple products.



4

ISOLATION OF THE METERING UNIT

A guillotine slide at the base of the hopper allows the metering unit to be isolated to change the seed roller.



5

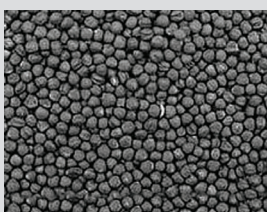
GEARING

Different gears can be selected in addition to the DOSAL metering roller adjustment, this maximises the range of seed rates possible whilst maintaining precision.

DOSAL

DOSAL CAN BE USED FOR:

RAPESEED



BARLEY



WHEAT



PEAS



FERTILISER

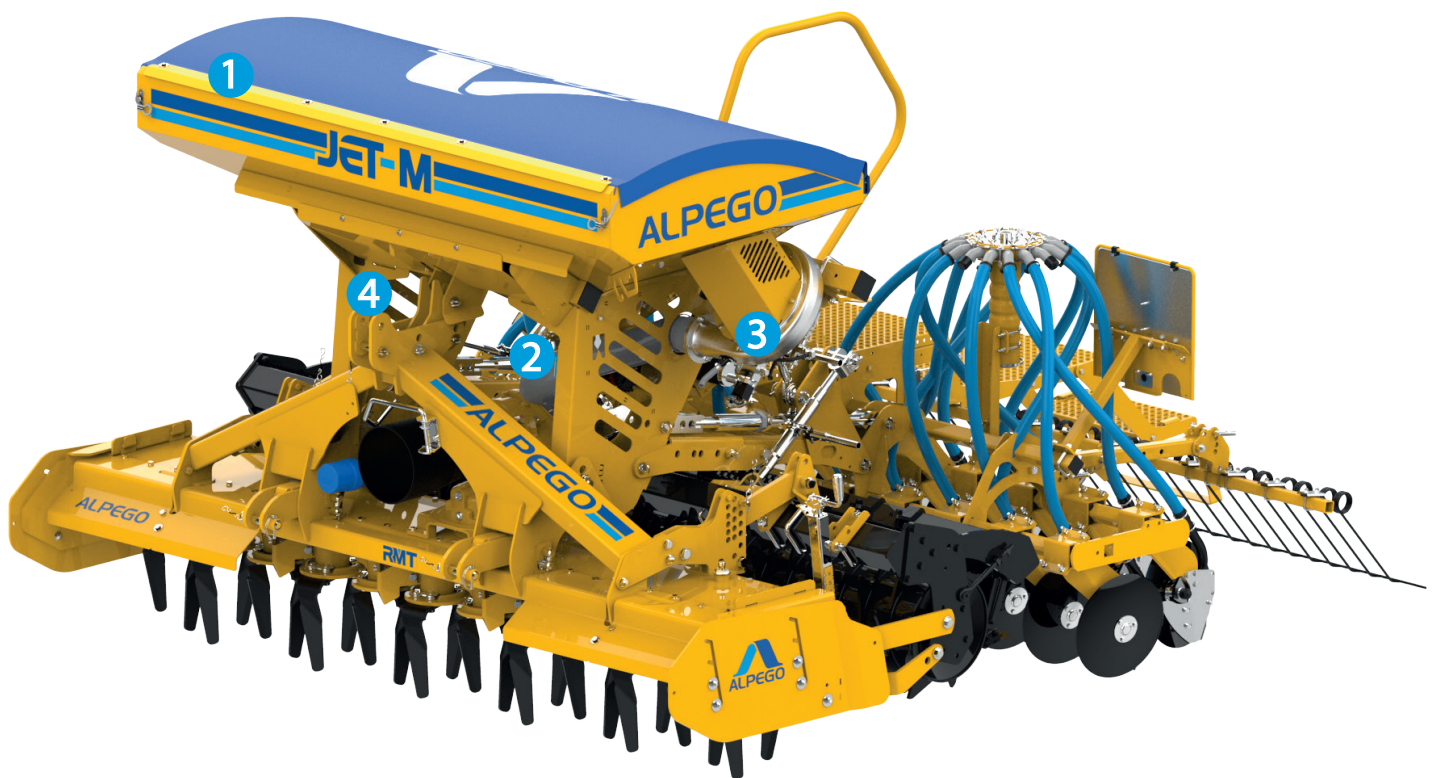


JET-M

The Jet M pneumatic seed drill is simple to use and very versatile. It is compatible with a number of different Alpego power harrows rated to work on tractors up to 250hp.

Compact rear mounted combination drills

EFFICIENT inside



1

STEEL HOPPER

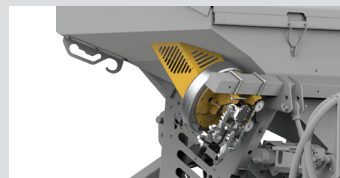
1000L hopper designed for close coupling to the tractor to reduce lift requirement, easily accessible using the large loading platform.



2

IRON METERING UNIT

Simple and practical stainless steel metering unit with 3 interchangeable rollers.



3

HYDRAULIC FAN

High performance but requires relatively low oil flow and hence suitable for smaller tractors.



4

QUICK RELEASE DRILL DISMOUNT

The Jet M has been designed so it can be demounted quickly and safely.

- Quick release power harrow mounting
- Stainless AIRON metering unit
- Hopper close to the tractor for reduced lift requirement
- RDS super plus control box
- 355mm boron single disc coulters



JET-M 300

Working width (cm)	300
Transport width (cm)	300
Number of seeding rows (no.)	24
Row spacing (cm)	12.5
Hopper capacity (Litres)	1000
Weight of the machine combined with the power harrow BG (kg)	2260
Weight of the machine combined with the power harrow RMT (kg)	2535
Weight of the machine combined with the power harrow RTEK (kg)	2700



5

CALIBRATION

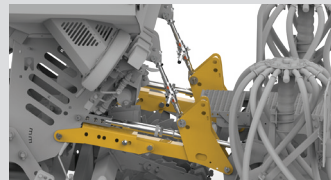
The easily accessible metering unit and test button make calibration simple.



6

FOLLOWING HARROW

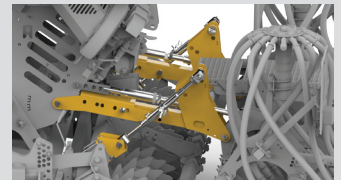
The adjustable following harrow ensures seed is covered in the most difficult conditions.



7

AUTO LEVEL CONNECTION (RMT AND RTEK)

The parallelogram mounted packer roller and parallel linkage connection for the coulters ensure consistent depth and pressure on the front and rear rows of coulters regardless of the working depth of the power harrow.



JET-X

The Jet X pneumatic seed drill is designed for the professional user and suitable for working in the most difficult conditions. It is compatible with Alpego power harrows rated to work on tractors up to 320hp.

Professional rear mounted combination drill

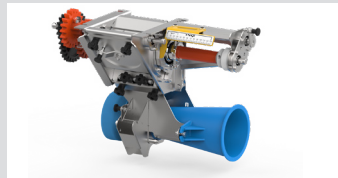
PROGRESS inside



1

STEEL HOPPER

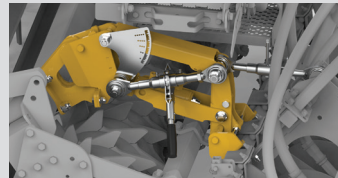
Extendable 1500L hopper designed for close coupling to the tractor to reduce lift requirement, easily accessible using the large loading platform.



2

DOSAL METERING UNIT

Stainless steel metering unit with adjustable roller and gearing to provide 2–450kg/ha of seed or fertiliser alongside precision for small seeds.



3

SEED DEPTH ADJUSTMENT

Quick, easy and accurate coulters depth adjustment using a graduated handle on a parallelogram.

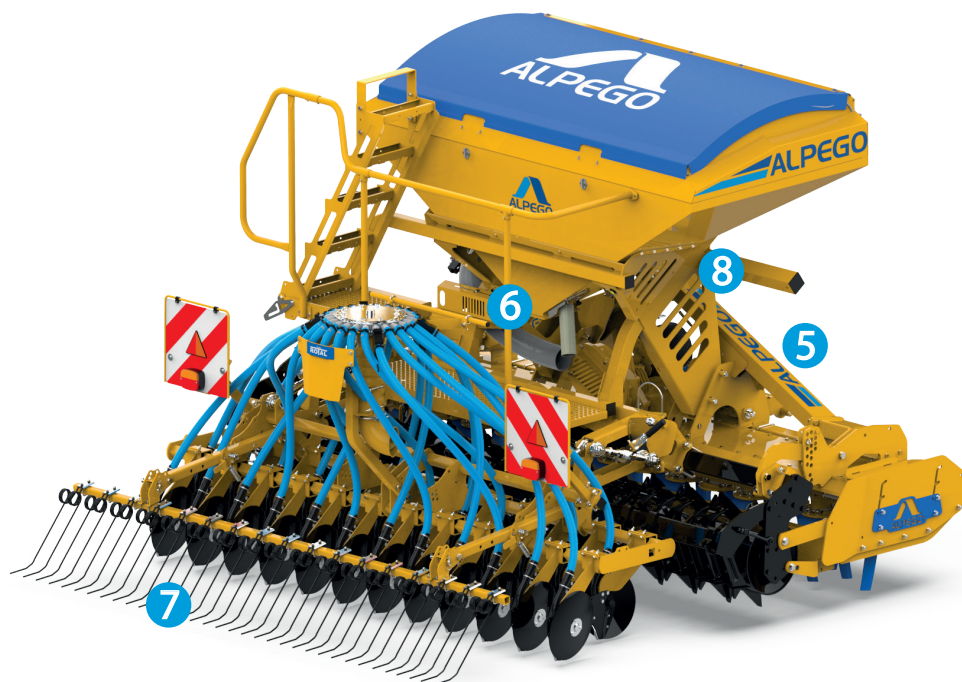


4

QUICK RELEASE LINKAGE

The Jet X has been designed so it can be demounted quickly and safely. The coulters bar can be removed on its own or the whole drill.

- Quick release power harrow mounting with fast electronic and hydraulic disconnection
- Stainless steel DOSAL metering unit
- Hopper close to the tractor for reduced lift requirement
- ISOBUS control
- 355mm boron steel single disc coulters



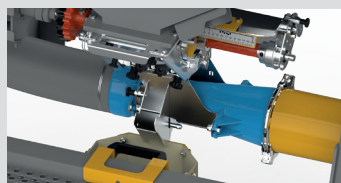
	JET-X 300	JET-X 400
Working width (cm)	300	400
Transport width (cm)	300	400
Number of seeding rows (no.)	24	32
Row spacing (cm)	12.5	12.5
Hopper capacity without extension (Litres)	1500	1500
Weight of the machine combined with the power harrow RTEK (kg)	2765	3445
Weight of the machine combined with the power harrow RMAX (kg)	2900	3630



5

FAST CONNECTION

All electronic and hydraulic connections are centralised to be disconnected in an instant.



6

CALIBRATION

The easily accessible metering unit and test button make calibration simple.



7

FOLLOWING HARROW

The adjustable following harrow ensures seed is covered in the most difficult conditions.










8

ISOBUS

Full ISOBUS drill management using the tractor screen.

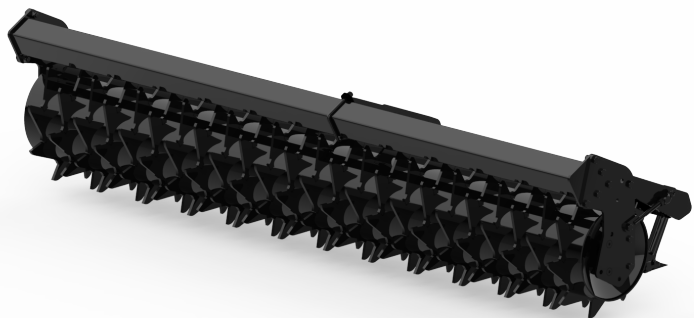
Which power harrow for which seed-drill?

Create the perfect combination for your tractor, workload and soil type

		JET-M	JET-X	ASPRO	ASMAX
BG		The BG is a medium duty power harrow suitable for tractors from 85 to 160hp, it is the perfect partner for a Jet M combination drill on lighter weight tractors.			
RMT		The RMT is a heavy duty power harrow suitable for tractors from 95 to 200hp, it features Alpego TWIN FORCE TEK and a packer roller mounted on parallelogram linkage to ensure the coulter depth is not altered when the power harrow depth is adjusted. The RMT in partnership with a Jet M drill provides a professional combination.			
RTEK		The RTEK is an extra heavy duty power harrow suitable for tractors from 120 to 250hp, it features Alpego TWIN FORCE TEK and a packer roller mounted on parallelogram linkage to ensure the coulter depth is not altered when the power harrow depth is adjusted. The RTEK is able to work in combination with a Jet M or Jet X drill on higher horsepower tractors.			
RMAX		The RMAX is an ultra heavy duty power harrow suitable for tractors from 160 to 320hp. It features Alpego TWIN FORCE MAX and a packer roller mounted on parallelogram linkage to ensure the coulter depth is not altered when the power harrow depth is adjusted. The RMAX is the ideal power harrow to work with the Jet X combination drill in the toughest conditions with heavy workloads.			
DP		The DP is a heavy duty folding power harrow suitable for tractors from 140 to 300hp. It provides the ideal partnership between weight and performance when combined with the ASPRO or ASMAX front hoppers.			
DTEK		The DTEK is an extra heavy duty folding power harrow suitable for tractors from 150 to 350hp. It features Alpego TWIN FORCE TEK and a packer roller mounted on parallelogram linkage to ensure the coulter depth is not altered when the power harrow depth is adjusted. It provides a high output machine when combined with the ASPRO or ASMAX front hoppers.			
DMAX		The DMAX is an ultra heavy duty folding power harrow suitable for tractors from 180 to 500hp. It features Alpego TWIN FORCE MAX and a packer roller mounted on parallelogram linkage to ensure the coulter depth is not altered when the power harrow depth is adjusted. When combined with a ASPRO or ASMAX front hopper the DMAX provides a high output, heavy combination for the largest of tractors.			

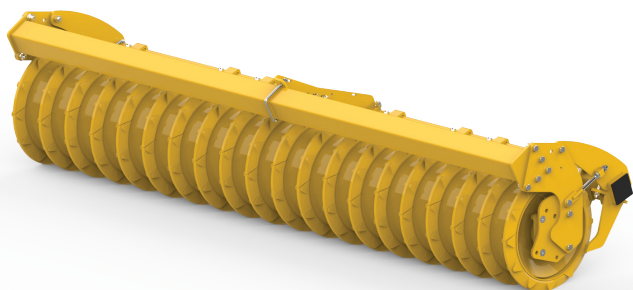
Your choice of roller

Consolidation is important for consistent establishment



PACKER ROLLER

Alpego packer rollers are available in 480, 520 or 570mm diameters depending on the power harrow they are fitted to. They are fitted with centrally adjustable individual scrapers and a levelling board. The levelling board is mounted to the front of the power harrow preventing multiple adjustments when the power harrow depth is altered.



TRAPEZE ROLLER

The Trapeze roller is 505mm in diameter and has notched ridges which provide additional drive in soft soil. The notched cast-steel roller ridges are spaced at 12.5cm or 15cm centres to line up with the drill coulters and provide a small furrow for the disc coulters to work in. Whilst consolidating across the full width the Trapeze roller leaves firm soil behind the ridges and loose soil in between which can then be used to cover the seeds. The end result is excellent soil to seed contact and capillary action of moisture towards the seed which improves germination and establishment.



WARRANTY

**2 YEAR WARRANTY
ON ALL ALPEGO PRODUCTS**

YEAR 1	YEAR 2
Full parts and labour	Limited parts only

* T&C's apply

For full terms and conditions or if you would like further information about the warranty on any ALPEGO product please don't hesitate to contact your local dealer or an ALPEGO representative.

Control solutions for different drill combinations



Super-Plus

- Manages seeding operation
- Push-button calibration
- Pre start metering function
- Monitors fan, metering roller and seed level
- On the move seed rate adjustment
- GPS speed sensor

Isobus control through the tractor screen –

- Full management of the drilling and tramlines
- Push button calibration
- Pre start metering function
- Fan, metering roller and low level monitoring
- On the move seed rate adjustment



TC7

- 7" high resolution colour touch-screen (800x480TFT)
- 2 USB ports for data transfer
- RS232 serial port
- Camera input
- CAN-BUS connector
- Wireless interface from rear USB
- Additional licensed functions available
 - Task Control (TC), Section Control (TCSC), Variable Rate (VRC)

Option for tractors without ISOBUS

Which accessory for which seeder?

Customise your combination

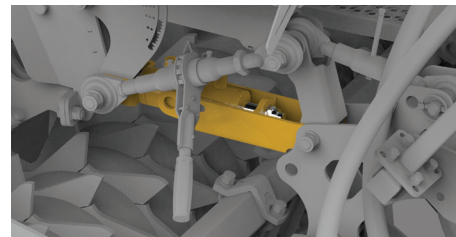


DEMOUNT STANDS

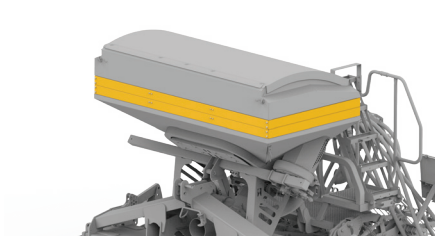
(Standard on Jet M and Jet X in the UK)



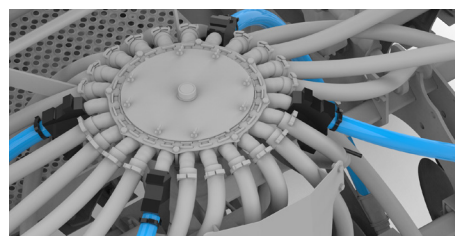
HYDRAULIC ROW MARKERS



HYDRAULIC COULTER LIFT

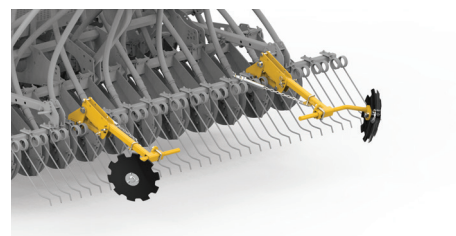


STAINLESS STEEL HOPPER EXTENSION 250L

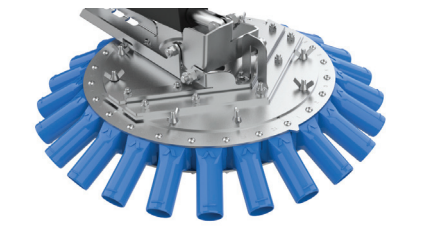


2+2 TRAMLINE KIT

(Standard on drills in UK)

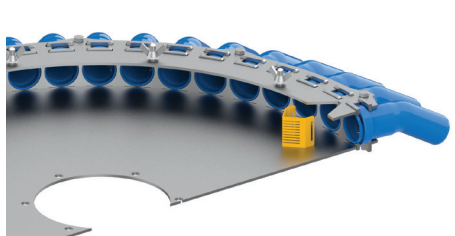


PRE-EMERGENCE MARKERS

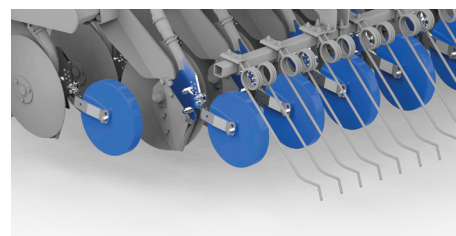


ELECTRIC HALF WIDTH SHUT OFF

(Standard in UK on Jet X – Manual on Jet M)



INDIVIDUAL ROW BLOCKING PLUG



PRESS WHEELS

Options	JET-M	JET-X
Demount stands	Standard	Standard
Hydraulic row markers	Option	Option
Hydraulic coulter lift	Option	Option
Stainless steel hopper extension + 250 litres	Not available	Option
2+2 tram-line kit	Standard	Standard
Pre-emergence markers	Option	Option
Electric half width shut off	Not available	Option
Individual row blocking plug	Option	Option
Press wheel	Option	Option

Option

Standard

Not available





ALPEGO

AS MAX



Distributed by 

 Profit from our knowledge

OPICO is committed to support your machine throughout its working life.

A full range of genuine ALPEGO wearing parts are available from your local dealer.

OPICO Ltd.
Cherry Holt Road, Bourne,
Lincolnshire PE10 9LA.
ask@opico.co.uk
opico.co.uk
01778 421111
@opicoag



(V2) 22/11/24

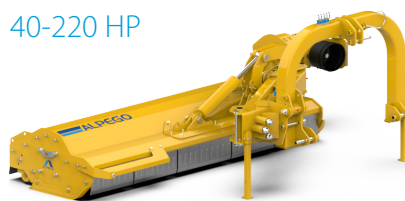
FLAIL MOWERS

40-220 HP



OFFSET FLAIL MOWERS

40-220 HP



RIGID POWER HARROWS

35 - 320 HP



FOLDING POWER HARROWS

120 - 500 HP



STONE BURIERS

90 - 500 HP



ROTARY CULTIVATORS

75 - 500 HP



COMBI-DRILLS

75 - 320 HP



FRONT HOPPERS

120 - 500 HP

