

L FRONT LOADERS

L FRONT LOADERS

RANGES A/U/T
FROM FARMALL 55 C TO PUMA 240



CASE **II**

CASE **II**

ALL FOR ONE AND ONE FOR ALL

The new Case IH L front loader series

For decades, Case IH has striven to continually improve the performance of our front loaders to help our customers to get the maximum return on their investment. The new Case IH L front loaders combine performance, robustness, loading capacity and modern design into a new and innovative loader concept.





INTRO	02 – 03
OFFERING	04 – 05
DESIGN AND COMPATIBILITY	06 – 07
EFFORTLESS PREPARATION	08 – 09
FAST COUPLING	10 – 11
IMPLEMENT CONNECTION	12 – 13
VERSATILITY	14 – 15
PRECISE LEVELLING AND SMART FUNCTIONS	16 – 17
QUALITY AND COMFORT	18 – 19
TECHNICAL DATA	20 – 27

EXPAND YOUR CAPABILITIES

The new Case IH L front loader ranges

THE NEW LOADER LINE-UP BY CASE IH OPENS UP NEW HORIZONS: THREE RANGES (A, U AND T) AND 27 MODELS IN TOTAL HAVE BEEN DEVELOPED TO HELP YOU GET THE MOST OUT OF YOUR CASE IH TRACTOR.



Each loader is perfectly designed for use with many of our tractor models. Benefit from maximum precision, rapid response and next level capacities – with remarkable ease of handling.

RANGES	A	U	T
SHOCK ELIMINATOR System®		Standard	
MACH System®		Standard	
FITLOCK2+ System®	–		Standard
FITLOCK _M System®	Standard		–
MACH2 System®	Option		Standard
FAST-LOCK System®		Option	Option
AUTO-UNLOAD System®			Option

THE BASIS OF SUCCESS

THE A RANGE

These efficient front loaders are equipped with mechanical self-levelling as standard, and the FITLOCK_M System® for fast loader hitching/unhitching. To handle a wide range of attachments, loaders series A offer a third hydraulic function.

- 3 models available from the Farmall 55C to the Maxxum 150 tractors
- Maximum lift heights from 3.38m up to 4.04m
- Maximum lift capacities from 1,603kg up to 2,480kg



VERSATILE AND DURABLE

THE U RANGE

The robust U front loader with mechanical self-levelling is ideal for everyday handling tasks. They are easy to operate and are offered with the FITLOCK2+ System® for automatic locking and unlocking.

- 14 models available from the Farmall 55C to the Puma 165 tractors
- Maximum lift heights from 3.48m up to 4.57m
- Maximum lift capacities from 1,447kg up to 2,951kg



PREMIUM DESIGN – MAXIMUM OUTPUT

THE T RANGE

The flagship T front loader is a premium specification range including hydraulic self-levelling as standard to increase the lifting power by 35%. This unique PCH system automatically maintains the implement angle by using two perfectly integrated compensation rams, constantly connected to the dumping rams.

- 10 models available from the Farmall 55C to the Puma 240 tractors
- Maximum lift heights from 3.73m up to 4.68m
- Maximum lift capacities from 1,446kg up to 3,261kg

One common mounting frame to simplify interchangeability between L loader ranges



MEANT TO BE TOGETHER

Seamless interfaces for maximum efficiency

Case IH has listened to the customer and developed a new series of features to guarantee that the front loader and chosen implements are compatible with your tractor model.

FULL INTEGRATION WITH CASE IH TRACTORS

The front loaders are perfectly integrated with the tractor's chassis right on the assembly line to maximise operator comfort without impacting the tractor's turning radius or service accessibility.

- No impact on turning radius and manoeuvrability.
- Interchangeability between front loaders and tractors.

ROBUST MOUNTING BRACKETS

The cast-iron mounting brackets are supported by a crossbar fixed under the tractor chassis and reinforced side plates to deliver long-term durability, improved clearance and easy access to service points.

OPTIMAL WEIGHT DISTRIBUTION FOR STABILITY

The loader bracket is optimally positioned near the tractor's centre of gravity, reducing stress on the front axle and distributing the weight of the load for greater stability. Perfect lifting capacity is ensured by a vertical lifting curve which provides a constant lifting force from the bottom upwards.

PERFECT VISIBILITY

The entire structure of the front loader has been designed for an unobstructed view: the width of the lifting arms has been optimised and the crossbeam has been positioned very far forward. Hose and wiring harness are integrated into the boom, ensuring an uncluttered field of vision.





EASY LOADER OPERATION

Ergonomic. Quick.
Comfortable.

Experience the vast advantages that come along with our joysticks: Our latest model provides new features such as a forward/reverse button, transmission control and loader commands that are now available for Vestrum CVXDrive, Maxxum and Puma range tractors. As a result, you keep control of your operations easily – whether it is your front loader or tractor.



FARMALL A AND FARMALL C TRACTORS

ADVANCED MECHANICAL JOYSTICK FOR FARMALL C HI-LOW & HD

- Joystick includes 3rd, 4th and 5th loader function push buttons
- HI/LO push buttons
- Declutch button

MECHANICAL JOYSTICK FOR FARMALL C M / PS AND FARMALL A

- With 3rd front loader function
- Safety lock to prevent unexpected lever movements



LUXSUM TRACTORS

LOADER JOYSTICK

- 2 proportional controls (x/y axis)
- 3 buttons to control 3rd and 4th functions
- Shift button controls 3rd valve
- Active Drive 4 gear shift
- Declutch function
- Maximum control when operating tractor with the front loader



VESTRUM CVXDRIVE, MAXXUM AND PUMA TRACTORS

ADVANCED LOADER JOYSTICK

- Forward/reverse toggle button
- 2 proportional controls (x/y axis)
- 3rd and 4th front loader functions
- Shift button controls 3rd valve
- 2 actions can be controlled simultaneously with transmission control and forward/reverse switch

OPTION – ELECTRO PROPORTIONAL JOYSTICK WITH 3 BUTTONS

- 2 buttons (green and grey) to control 3rd and 4th functions
- Allow 2 actions simultaneously.



QUICKLY PREPARED FOR ANYTHING

Save time with easy coupling

FITLOCK 2+ SYSTEM® (U + T RANGES)

U and T range loaders are fitted with the FITLOCK 2+ premium system, allowing automatic, easy and safe locking of the loader, even on uneven surfaces. The operator needs to get out of cab only once, making mounting and removing much quicker.

FITLOCK_M SYSTEM® (A RANGE)

A range loaders are equipped with the simplified FITLOCK_M System® system with single-stage, manual locking, which makes mounting and removing the loader very convenient. Detaching the loader is the same simple process.

MACH COUPLER

The MACH multicoupler allows quick coupling and uncoupling of all hydraulic and electric loader functions with ease, even when the lines are under pressure. The hydraulic connectors have flat seals, eliminating any risk of pollution of the hydraulic circuits or the environment.

- Instant hydraulic and electric connection, even under pressure.



LOCK INDICATOR

A lock indicator, visible from the outside as well as from inside the cab, informs the operator about the status of the locking system: red for locked and green for unlocked

- Greater safety through awareness of coupling status

IMPLEMENT POSITION INDICATOR

Every front loader series has an accurate implement position indicator at all lifting heights. With the easily visible position indicator, you are always sure of the angle of the attachment in relation to the ground. On the T range, the position indicator has 3 markers that can be used for 3 different tools.



SHOCK ABSORBER

Comfort Drive is a standard feature on all front loader ranges. A nitrogen-filled accumulator set at 20 bar integrated to the right bracket absorbs shocks and helps reduce peak loads. For special applications where precise implement control is required, the feature can be switched off in the cab (option).



MOUNTING AND REMOVING WITHIN MINUTES

Loader connection has never been so easy

MACH2® SYSTEM

The MACH2® System allows the easy connection of the third and fourth function between attachments and front loader with a single movement, even under pressure. MACH2® System couplings also feature a flat seal so they don't drip, preventing oil stains in your parking area.

SEMI-AUTOMATIC IMPLEMENT LOCKING

On the A range, the implement is manually unlocked with handles on each side of the carrier. On U and T ranges, the implement is unlocked with a single lever located on the left side. All tool carriers lock automatically by tilting the implement upwards and unlock manually as standard.



UNLOCKED



LOCKED

FAST-LOCK SYSTEM®

Nothing beats the comfort of electro-hydraulically hitching and unhitching implements without leaving your seat – a new dimension of convenience with the FAST-LOCK System®. This system operates independently of the 3rd function, which remains available for other operating movement. FAST-LOCK System® is not compatible with mixed tools carriers.

4TH FUNCTIONS

For the easy operation of hydraulic implements that require two hydraulic supplies (such as silage tongs, bale grabbers or bale stackers), U and T ranges can be equipped with 4th functions.



INNOVATION COMES IN ALL SHAPES AND SIZES

A wide variety of options awaits you

In addition to the Case IH front loader ranges, the offering wouldn't be complete without a wide range of carriers and a comprehensive attachment line-up. From buckets to bale handling, pallet to manure forks, everything can be ordered directly with the tractor and front loader.

VARIOUS CARRIER CHOICES

Compatibility is a key factor when you are working with implements in your daily job. Case IH has made sure that our carriers can support other front loader attachments.



Up to 7 implement carrier systems are available:

STANDARD: EURO QUICK ATTACH

This carrier comes as standard and will support all Euro attachments.



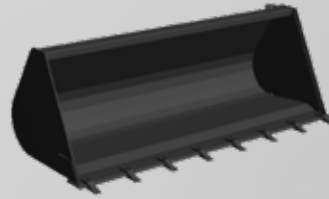
- OPTIONAL: CARRIER SYSTEMS**
- MX -Faucheux White
 - MX Quick Attach
 - MX-Euro Quick Attach
 - EURO-Tenias
 - EURO-Sigma 4
 - EURO-SMS Quick Attach

ATTACHMENTS

You'll be amazed at the wide range of attachments available for and compatible with our loader series. All can be ordered directly with the tractor and front loader.

- Bucket and grabs
- Forks/grabs
- Specialised tools
- Bale handling
- ...and many more!

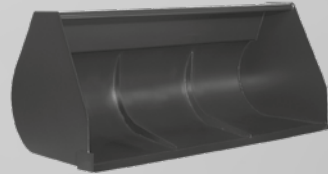
EARTH BUCKET



GENERAL PURPOSE BUCKET



HIGH CAPACITY BUCKET



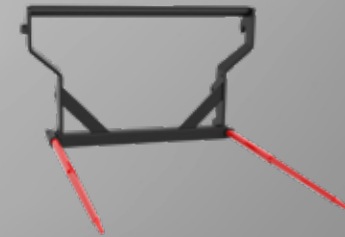
MULTI-PURPOSE BUCKET



MANUBAL W500



MANUBAL L40



PALLET FORK



MANUBAL C40



MANURE FORK



PRECISE LEVELLING AND SMART FUNCTIONS

Experience a new way up and down!



Choose your preference when it comes to keeping your attachment level. Case IH front loaders are available as Non-Self-Leveling (NSL), Mechanical Self-Leveling (MSL) or with an exclusive hydraulic parallelogram (PCH).

OPTIMAL PARALLEL GUIDANCE

Mechanical self-levelling is equipped on loaders serie A as standard and is standard on 10 U range models. The proven self-levelling linkage, shaped like a compact parallelogram, provides perfect visibility while ensuring that attachments are kept at the same angle no matter their elevation.

NON-SELF-LEVELLING (NSL)

The economical choice when you don't need to keep the implement level while lifting or if manual levelling is your preference. This option has no components above the boom for greater visibility. 4 U range models are provided with non self-levelling as standard.

WITHOUT PARALLELOGRAM

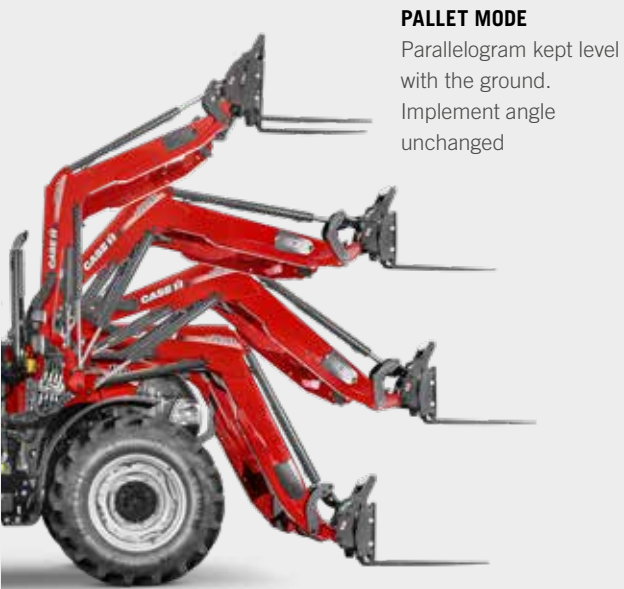


WITH MECHANICAL PARALLELOGRAM



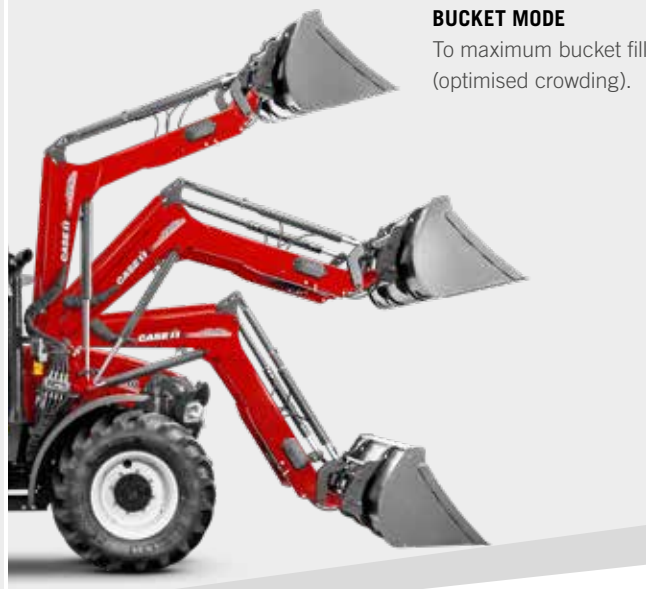






PALLET MODE

Parallelogram kept level with the ground. Implement angle unchanged

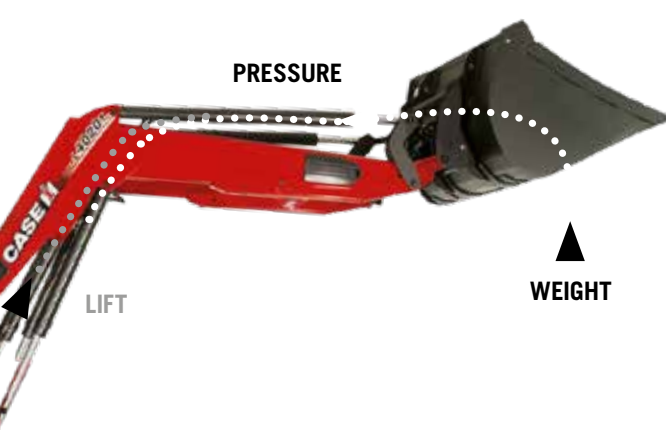


BUCKET MODE

To maximum bucket fill (optimised crowding).



AUTO UNLOAD



AUTO UNLOAD FEATURE

T range loaders with 3rd function can be equipped with Auto Unload, an implement control system that increases safety and efficiency. Instead of juggling three sets of controls, the operator can simply push a button to activate the open/close setting of the 3rd function. Stay focused on manoeuvring without compromising productivity.

PCH HYDRAULIC PARALLELOGRAM

The T range is equipped with a PCH hydraulic self-levelling linkage. This unique feature automatically maintains the implement's angle by using two perfectly integrated compensation rams, constantly connected to the dumping rams.

The PCH System[®] also increases lifting power by up to 35%. The weight of the loaded attachment generates pressure in the tilt rams which is transferred to the PCH rams and supports the lifting process.

PCH ADVANTAGES (COMPARED TO MECHANICAL SELF-LEVELLING):

- 35% more lifting power
- Market leading crowding angle of 52° – full crowd movement
- 20% additional load volume
- Faster cycling time

GOOD REASONS FOR A GOOD DECISION

There are plenty of good reasons to choose our loaders: ease of mounting, higher lift capacity, perfect visibility, best levelling accuracy and many more.

Whatever your needs, you'll find the right loader to get the job done efficiently, no matter the application.

OFFERING



EVERYTHING YOU NEED

The new Case IH line-up with three ranges and a total of 27 models is the broadest range the brand has ever offered. All loaders can be ordered with a wide selection of implements to fit your needs.

- Complete line-up of 3 ranges with 27 models
- Up to 7 implements carrier systems available
- Compatible with Farmall C to Puma 240
- Maximum lift heights from 3.38m up to 4.68m
- Maximum lift capacities from 1,446kg up to 3,261kg
- Manufacturer warranty and retail finance

COMFORT



VISIBILITY

An innovative new slim design with a crossbeam positioned very far forward offers best front and lateral visibility during loader operations

ERGONOMIC

Joysticks with all loader functions are thoughtfully integrated into the tractor control layout.

- Flowrate adjustment in-cab increases performance
- The advanced loader joystick features forward/reverse shift button, transmission control and loader functions.

STANDARD FEATURE – A SMOOTH RIDE

SHOCK Eliminator® reduce shocks and bounce when handling heavy loads.

DESIGN



INTEGRATED DESIGN

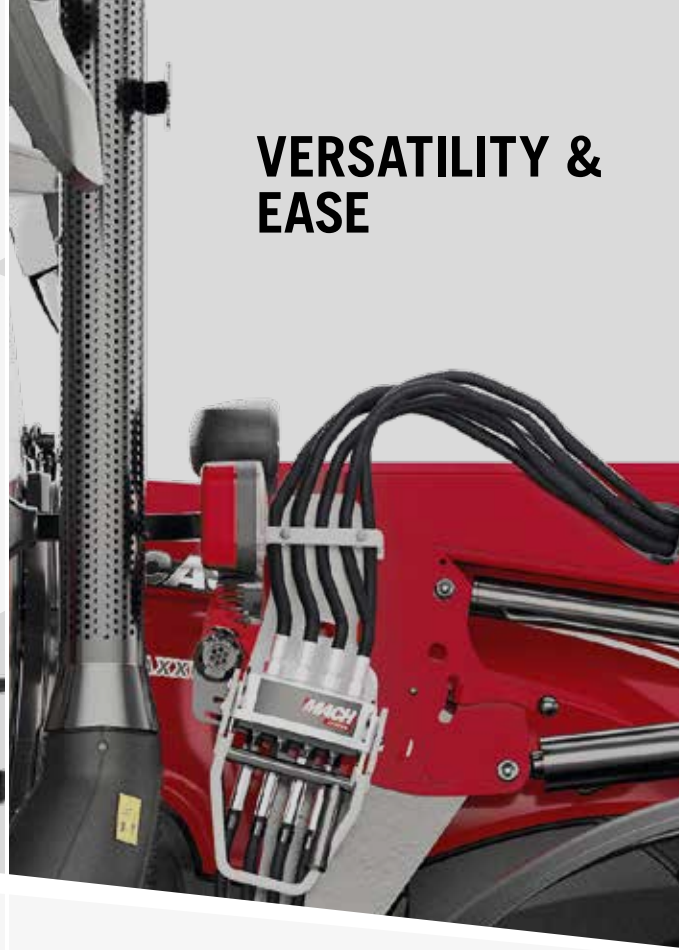
The compatible nature of the new loader ranges eliminates stress and guesswork.

- A common hooking system fits all front loader ranges for complete interchangeability
- Backward compatible for existing equipment
- Brackets can be factory-installed

QUALITY & DURABILITY

The unique boom design with minimum of welds and cast-iron mounting brackets reinforced with side plates deliver long-term durability even under extreme usage conditions. All pivot points are lubricated and reinforced by a welded, replaceable socket to ensure longevity.

VERSATILITY & EASE



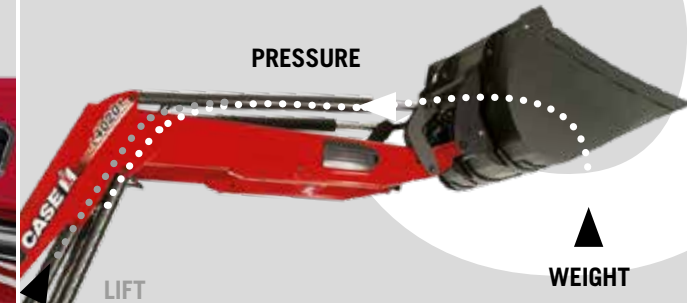
SIMPLICITY ITSELF

FITLOCK automatic locking system and the easy MACH hydraulic multicoupler let you connect your loader in less than a minute and with just one trip out of the cab. Save time during time-sensitive jobs around the farm!

VERSATILITY

Easy connection of the third and fourth function in a single movement with the MACH2® system, while FAST-LOCK System® allows electro-hydraulic hitching and unhitching of implements without leaving your seat.

PERFORMANCE & SAFETY



EASE OF OPERATION

At the touch of a button, the auto-unload feature can activate the open/close setting of the 3rd function, letting you stay focused on manoeuvring.

BOOSTING PRODUCTIVITY

A market leading 52° crowding angle ensures optimal bucket filling with 20% more filling volume and no spillage.

SAFETY

With a robust crossbar under the tractor chassis and the loader brackets optimally positioned near the tractor's centre of gravity, your machine is always stable.

A range loaders



- A:** Maximum lift height at implement pivot pin¹⁾ [mm]
- B:** Maximum lift height under horizontal bucket¹⁾ [mm]
- C1:** Clearance under dumped bucket at Max dumped angle [mm]
- D1:** Maximum reach at lift height / tyres (bucket at 45° dumped position) [mm]
- E:** Maximum dumped angle¹⁾ [°]
- F:** Reach with bucket on ground¹⁾ [mm]
- G:** Maximum rollback angle¹⁾ at ground level [°]
- H:** Digging depth¹⁾ [°]



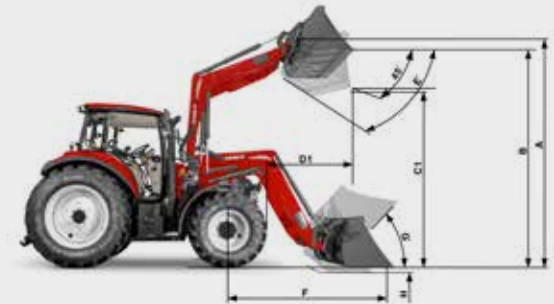
U range loaders



- A:** Maximum lift height at implement pivot pin¹⁾ [mm]
- B:** Maximum lift height under horizontal bucket¹⁾ [mm]
- C1:** Clearance under dumped bucket at Max dumped angle [mm]
- D1:** Maximum reach at lift height / tyres (bucket at 45° dumped position) [mm]
- E:** Maximum dumped angle¹⁾ [°]
- F:** Reach with bucket on ground¹⁾ [mm]
- G:** Maximum rollback angle¹⁾ at ground level [°]
- H:** Digging depth¹⁾ [°]



T range loaders



- A:** Maximum lift height at implement pivot pin¹⁾ [mm]
- B:** Maximum lift height under horizontal bucket¹⁾ [mm]
- C1:** Clearance under dumped bucket at Max dumped angle [mm]
- D1:** Maximum reach at lift height / tyres (bucket at 45° dumped position) [mm]
- E:** Maximum dumped angle¹⁾ [°]
- F:** Reach with bucket on ground¹⁾ [mm]
- G:** Maximum rollback angle¹⁾ at ground level [°]
- H:** Digging depth¹⁾ [°]



MODEL	FARMALL C	FARMALL C	FARMALL A	FARMALL C SELECTION	FARMALL C SELECTION	HIGHEST RATED FRONT AXLE		LUXXUM	LUXXUM	VESTRUM CVXDRIVE	HIGHEST RATED FRONT AXLE
	55 - 75 L3513A	55 - 75 L3815A	90 - 100 L3815A	100 - 120 L3815A	100 - 120 L4017A	FARMALL C ADVANCED 90 - 120 L3815A	FARMALL C ADVANCED 90 - 120 L4017A	100 - 120 L3815A	100 - 120 L4017A	100 - 130 L4017A	115 - 150 L4017A
Self-levelling type	Mechanical self-levelling	Mechanical self-levelling	Mechanical self-levelling	Mechanical self-levelling	Mechanical self-levelling	Mechanical self-levelling	Mechanical self-levelling	Mechanical self-levelling	Mechanical self-levelling	Mechanical self-levelling	Mechanical self-levelling
Loader working pressure [bar]	190	190	190	190	190	190	190	200		200	210
LIFT HEIGHTS											
A: Maximum lift height at implement pivot pin ¹⁾ [mm]	3,378	3,740	3,770	3,835	3,988	3,791	3,945	3,791	3,945	3,962	4,039
B: Maximum lift height under horizontal bucket ¹⁾ [mm]	3,090	3,452	3,488	3,553	3,706	3,509	3,663	3,509	3,663	3,680	3,757
C1: Clearance under dumped bucket at max dumped angle [mm]	2,521	2,883	2,878	2,943	3,096	2,899	3,053	2,899	3,053	3,074	3,151
D1: Maximum reach at lift height / tyres (bucket at 45° dumped position) [mm]	1,123	796	981	913	835	990	908	990	908	908	961
WORKING ANGLES											
E: Maximum dumped angle ¹⁾ [°]	50	50	57	57	57	57	57	57	57	56	56
F: Reach with bucket on ground ¹⁾ [mm]	2,430	2,505	2,321	2,209	2,551	2,305	2,634	2,305	2,634	2,578	2,367
G: Maximum rollback angle ¹⁾ at ground level [°]	51	47	49	47	49	43	44	43	44	50	49
DIGGING DEPTH											
H: Digging depth ¹⁾ [°]	279	182	166	101	167	151	217	151	217	192	121
LIFTING CAPACITY											
Lift capacity to maximum height - at implement pivot ¹⁾ [kg]	1,603	2,055	1,922	1,923	2,250	1,872	2,196	1,872	2,196	2,390	2,480
Lift capacity to 1.5 m height - at pivot point ¹⁾ [kg]	1,683	1,972	1,978	1,986	2,192	1,983	2,190	1,983	2,190	2,322	2,466
Breakout force at pivot pin ¹⁾ [kg]	1,891	2,058	2,131	2,133	2,282	2,166	2,313	2,166	2,313	2,419	2,579
Bucket rollback force at maximum height ¹⁾ [kg]	1,465	1,309	1,336	1,335	1,944	1,347	1,958	1,347	1,958	2,056	2,182
Bucket rollback force at ground level ¹⁾ [kg]	1,608	1,554	1,521	1,500	2,219	1,502	2,222	1,502	2,222	2,360	2,446
CYCLE TIME											
Raising time [sec.]	3.7	4.3	3.2	3.2	3.8	4.3	5.0	4.3	5.0	5.0	5.0
Lowering time [sec.]	2.6	2.9	2.2	2.2	2.6	2.9	3.4	2.9	3.4	3.4	3.4
Bucket dumped time from crowded position at max height [sec.]	1.7	1.5	1.1	1.1	1.3	1.5	1.7	1.5	1.7	1.7	1.7
Bucket rollback time at ground level [sec.]	2.3	2.0	1.5	1.5	1.7	2.0	2.3	2.0	2.3	2.3	2.3
FEATURES											
Loader ready frame ²⁾	•	•	•	•	•	•	•	•	•	•	•
3rd hydraulic function	•	•	•	•	•	•	•	•	•	•	•
MACH2 [®] (for 3rd function implement coupling)	◦	◦	◦	•	•	◦	◦	◦	◦	◦	◦
4th hydraulic function	-	-	-	-	-	-	-	-	-	-	-
MACH2 [®] (for 4th function implement coupling)	-	-	-	-	-	-	-	-	-	-	-
SHOCK ELIMINATOR [®] System	•	•	•	•	•	•	•	•	•	•	•
Electrical On / Off switch Shock Eliminator	◦	◦	◦	•	•	◦	◦	◦	◦	◦	◦
MACH System [®]	•	•	•	•	•	•	•	•	•	•	•
FITLOCK2+ System [®]	-	-	-	-	-	-	-	-	-	-	-
EURO QUICK ATTACH IMPLEMENT CARRIER	•	•	•	•	•	•	•	•	•	•	•
MX QUICK ATTACH IMPLEMENT CARRIER	◦	◦	◦	•	•	◦	◦	◦	◦	◦	◦
OTHER QUICK OPTIONS: MX – EURO, EURO – SMS, MX – FAUCHEUX WHITE, EURO – TENIAS, EURO – SIGMA 4	-	-	-	-	-	-	-	-	-	-	-
FAST-LOCK System [®] (for EURO or MX QUICK ATTACH)	-	-	-	-	-	-	-	-	-	-	-
AUTO-UNLOAD System [®]	-	-	-	-	-	-	-	-	-	-	-
PCH SYSTEM [®] - Hydraulic self-levelling system	-	-	-	-	-	-	-	-	-	-	-
Mechanic self-levelling (MSL)	•	•	•	•	•	•	•	•	•	•	•
CONFIGURATION											
Model used to collect data	Farmall 65C	Farmall 65C	Farmall 100A	Farmall 120 C Selection	Farmall 120 C Selection	Farmall 90C	Farmall 90C	Luxxum 120	Luxxum 120	Vestrum 120CVX	Maxxum 135 CVX
Front tyres	11.2 R24	11.2 R24	440 / 65 R24	380/70R28	380/70R28	340 / 85 R24	340 / 85 R24	340 / 85 R28	340 / 85 R28	340 / 85 R28	480 / 65 R28
Rear tyres	420 / 85 R30	420 / 85 R30	540 / 65R34	480/70R38	480/70R38	420 / 85 R34	420 / 85 R34	420 / 85 R38	420 / 85 R38	420 / 85 R38	600 / 65 R38
Required counterweight to meet EN 12525 safety standard	1,040	1,454	867	812	1229	962	1,385	962	1,385	976	576

¹⁾ According to ASABE S301.5
²⁾ Factory installed or with front loader option for dealer installation
• Standard ◦ Optional - Not available

MODEL	LUXXUM	LUXXUM	LUXXUM	LUXXUM	LUXXUM	LUXXUM
	100 - 120	100 - 120	100 - 120	100 - 120	100 - 120	100 - 120
	L3816U	L3915U	S3916U	L3920U	L4015U	L4018U
Self-levelling type	Mechanical self-levelling	Non-self-levelling	Mechanical self-levelling	Mechanical self-levelling	Non-self-levelling	Mechanical self-levelling
Loader working pressure [bar]	200	200	200	200	200	200
LIFT HEIGHTS						
A: Maximum lift height at implement pivot pin ¹⁾ [mm]	3,786	3,829	3,829	3,829	3,927	3,927
B: Maximum lift height under horizontal bucket ¹⁾ [mm]	3,504	3,547	3,547	3,547	3,645	3,645
C1: Clearance under dumped bucket at max dumped angle [mm]	2,894	2,937	2,937	2,937	3,035	3,035
D1: Maximum reach at lift height / tyres (bucket at 45° dumped position) [mm]	1,035	1,049	1,049	1,049	991	991
WORKING ANGLES						
E: Maximum dumped angle ¹⁾ [°]	57	57	57	57	57	57
F: Reach with bucket on ground ¹⁾ [mm]	2,370	2,508	2,508	2,508	2,654	2,654
G: Maximum rollback angle ¹⁾ at ground level [°]	44	45	45	45	46	46
DIGGING DEPTH						
H: Digging depth ¹⁾ [°]	212	262	262	262	302	302
LIFTING CAPACITY						
Lift capacity to maximum height - at implement pivot ¹⁾ [kg]	1,832	2,332	1,975	2,319	2,272	2,259
Lift capacity to 1.5 m height - at pivot point ¹⁾ [kg]	2,051	2,489	2,103	2,475	2,377	2,363
Breakout force at pivot pin ¹⁾ [kg]	2,389	2,770	2,340	2,754	2,613	2,597
Bucket rollback force at maximum height ¹⁾ [kg]	2,041	1,782	1,848	2,279	1,882	1,949
Bucket rollback force at ground level ¹⁾ [kg]	1,320	1,904	1,778	2,194	2,068	1,962
CYCLE TIME						
Raising time [sec.]	4.5	5.4	4.7	5.4	5.4	5.4
Lowering time [sec.]	2.8	3.2	2.9	3.2	3.2	3.2
Bucket dumped time from crowded position at max height [sec.]	0.6	1.3	0.8	0.9	1.3	0.8
Bucket rollback time at ground level [sec.]	0.9	2.0	1.1	1.3	2.0	1.1
FEATURES						
Loader ready frame ²⁾	•	•	•	•	•	•
3rd hydraulic function	•	•	•	•	•	•
MACH2® (for 3rd function implement coupling)	•	•	•	•	•	•
4th hydraulic function	○	○	○	○	○	○
MACH2® (for 4th function implement coupling)	○	○	○	○	○	○
SHOCK ELIMINATOR® System	•	•	•	•	•	•
Electrical On / Off switch Shock Eliminator	○	○	○	○	○	○
MACH System®	•	•	•	•	•	•
FITLOCK2+ System®	•	•	•	•	•	•
EURO QUICK ATTACH IMPLEMENT CARRIER	•	•	•	•	•	•
MX QUICK ATTACH IMPLEMENT CARRIER	○	○	○	○	○	○
OTHER QUICK OPTIONS: MX – EURO, EURO – SMS, MX – FAUCHEUX WHITE, EURO – TENIAS, EURO - SIGMA 4	○	○	○	○	○	○
FAST-LOCK System® (for EURO or MX QUICK ATTACH)	○	○	○	○	○	○
AUTO-UNLOAD System®	-	-	-	-	-	-
PCH SYSTEM® - Hydraulic self-levelling system	-	-	-	-	-	-
Mechanic self-levelling (MSL)	•	-	•	•	-	•
CONFIGURATION						
Model used to collect data	Luxxum 120	Luxxum 120	Luxxum 120	Luxxum 120	Luxxum 120	Luxxum 120
Front tyres	340 / 85 R28	340 / 85 R28	340 / 85 R28	340 / 85 R28	340 / 85 R28	340 / 85 R28
Rear tyres	420 / 85 R38	420 / 85 R38	420 / 85 R38	420 / 85 R38	420 / 85 R38	420 / 85 R38
Required counterweight to meet EN 12525 safety standard	1,021	990	1,071	1,476	985	1,452

VESTNUM	VESTNUM	VESTNUM
CVXDrive 100 - 130	CVXDrive 100 - 130	CVXDrive 100 - 130
L3915U	L3916U	L3920U
Non-self-levelling	Mechanical self-levelling	Mechanical self-levelling
200	200	200
LIFT HEIGHTS		
3,848	3,848	3,848
3,566	3,566	3,566
2,960	2,960	2,960
1,045	1,045	1,045
WORKING ANGLES		
56	56	56
2,448	2,448	2,448
51	51	51
DIGGING DEPTH		
237	237	237
LIFTING CAPACITY		
2,537	2,151	2,523
2,637	2,230	2,623
2,891	2,445	2,875
1,866	1,938	2,389
2,038	1,908	2,352
CYCLE TIME		
5.4	4.7	5.4
3.2	2.9	3.2
1.3	0.8	0.9
2.0	1.1	1.3
FEATURES		
•	•	•
•	•	•
•	•	•
•	•	•
○	○	○
○	○	○
•	•	•
○	○	○
•	•	•
•	•	•
•	•	•
○	○	○
○	○	○
-	-	-
-	-	-
-	•	•
CONFIGURATION		
Vestrum 120CVX	Vestrum 120CVX	Vestrum 120CVX
340 / 85 R28	340 / 85 R28	340 / 85 R28
420 / 85 R38	420 / 85 R38	420 / 85 R38
582	659	1,056

¹⁾ According to ASABE S301.5
²⁾ Factory installed or with front loader option for dealer installation
• Standard ○ Optional - Not available

VESTRUM	VESTRUM	VESTRUM
CVXDrive 100 - 130	CVXDrive 100 - 130	CVXDrive 100 - 130
L4015U	L4018U	L4022U
Non-self-levelling	Mechanical self-levelling	Mechanical self-levelling
200	200	200
3,945	3,945	3,945
3,663	3,663	3,663
3,057	3,057	3,057
988	988	988
56	56	56
2,595	2,595	2,595
52	52	52
277	277	277
2,471	2,457	2,848
2,519	2,505	2,912
2,732	2,717	3,159
1,965	2,037	2,510
2,204	2,094	2,579
5.4	5.4	6.2
3.2	3.2	4.0
1.3	0.8	0.9
2.0	1.1	1.3
•	•	•
•	•	•
•	•	•
•	•	•
○	○	○
○	○	○
•	•	•
○	○	○
•	•	•
•	•	•
•	•	•
○	○	○
○	○	○
○	○	○
-	-	-
-	-	-
-	•	•
Vestrum 120CVX	Vestrum 120CVX	Vestrum 120CVX
340 / 85 R28	340 / 85 R28	340 / 85 R28
420 / 85 R38	420 / 85 R38	420 / 85 R38
578	1,035	1,459

HIGHEST RATED FRONT AXLE					
MAXXUM	MAXXUM	MAXXUM	MAXXUM	MAXXUM	MAXXUM
CVXDrive 115 - 150	CVXDrive 115 - 150	CVXDrive 115 - 150	CVXDrive 115 - 150	CVXDrive 115 - 150	CVXDrive 115 - 150
L4015U	L4018U	L4022U	L4219U	L4222U	L4522U
Non-self-levelling	Mechanical self-levelling	Mechanical self-levelling	Mechanical self-levelling	Mechanical self-levelling	Mechanical self-levelling
210	210	210	210	210	210
4,021	4,021	4,021	4,127	4,127	4,566
3,739	3,739	3,739	3,845	3,845	4,284
3,133	3,133	3,133	3,239	3,239	3,678
1,043	1,043	1,043	964	964	604
56	56	56	56	56	56
2,397	2,397	2,397	2,533	2,533	2,631
51	51	51	51	51	50
206	206	206	232	232	209
2,561	2,547	2,951	2,485	2,882	2,825
2,676	2,662	3,092	2,541	2,957	2,714
2,922	2,906	3,377	2,745	3,194	2,881
2,093	2,168	2,670	2,211	2,722	2,394
2,247	2,134	2,628	2,258	2,780	2,598
5.4	5.4	6.2	5.4	6.2	6.4
3.2	3.2	4.0	3.2	4.0	4.1
1.3	0.8	0.9	0.7	0.9	1.0
2.0	1.1	1.3	1.0	1.2	1.3
•	•	•	•	•	•
•	•	•	•	•	•
•	•	•	•	•	•
•	•	•	•	•	•
○	○	○	○	○	○
○	○	○	○	○	○
•	•	•	•	•	•
○	○	○	○	○	○
•	•	•	•	•	•
•	•	•	•	•	•
○	○	○	○	○	○
○	○	○	○	○	○
-	-	-	-	-	-
-	-	-	-	-	-
-	•	•	•	•	•
Maxxum 135 CVX	Maxxum 135 CVX	Maxxum 135 CVX	Maxxum 135 CVX	Maxxum 135 CVX	Maxxum 135 CVX
480 / 65 R28	480 / 65 R28	480 / 65 R28	480 / 65 R28	480 / 65 R28	480 / 65 R28
600 / 65 R38	600 / 65 R38	600 / 65 R38	600 / 65 R38	600 / 65 R38	600 / 65 R38
191	638	1,054	615	1,030	918

PUMA	PUMA	PUMA
140 - 165	140 - 165	140 - 165
L4219U	L4222U	S4522U
Mechanical self-levelling	Mechanical self-levelling	Mechanical self-levelling
210	210	210
4,129	4,129	4,575
3,847	3,847	4,293
3,237	3,237	3,683
1,011	1,011	652
57	57	57
2,522	2,522	2,617
50	50	49
237	237	214
2,412	2,799	2,728
2,546	2,962	2,720
2,789	3,246	2,924
2,242	2,760	2,426
2,221	2,733	2,558
5.4	6.2	6.4
3.2	4.0	4.1
0.7	0.9	1.0
1.1	1.2	1.3
•	•	•
•	•	•
•	•	•
○	○	○
○	○	○
•	•	•
○	○	○
•	•	•
•	•	•
○	○	○
○	○	○
-	-	-
-	-	-
-	•	•
Puma 175 CVX	Puma 175 CVX	Puma 175 CVX
14.9 R28	14.9 R28	14.9 R28
18.4 R38	18.4 R38	18.4 R38
536	953	838

MODEL	FARMALL C		FARMALL A		FARMALL C SELECTION	
	55 - 75 L3814T		90 - 100 L3814T		100 - 120 L3814T	
	Hydraulic self-levelling		Hydraulic self-levelling		Hydraulic self-levelling	
Self-levelling type	Hydraulic self-levelling		Hydraulic self-levelling		Hydraulic self-levelling	
Loader working pressure [bar]	190		190		190	
LIFT HEIGHTS						
A: Maximum lift height at implement pivot pin ¹⁾ [mm]	3,737	3,766	3,809	3,831	3,874	
B: Maximum lift height under horizontal bucket ¹⁾ [mm]	3,449	3,484	3,527	3,549	3,592	
C1: Clearance under dumped bucket at max dumped angle [mm]	2,880	2,874	2,917	2,939	2,982	
D1: Maximum reach at lift height / tyres (bucket at 45° dumped position) [mm]	837	1,025	1,040	957	972	
WORKING ANGLES						
E: Maximum dumped angle ¹⁾ [°]	50	57	57	57	57	
F: Reach with bucket on ground ¹⁾ [mm]	2,554	2,379	2,513	2,277	2,421	
G: Maximum rollback angle ¹⁾ at ground level [°]	49	51	52	49	50	
DIGGING DEPTH						
H: Digging depth ¹⁾ [°]	243	227	227	162	212	
LIFTING CAPACITY						
Lift capacity to maximum height - at implement pivot ¹⁾ [kg]	1,578	1,482	1,849	1,483	1,850	
Lift capacity to 1.5 m height - at pivot point ¹⁾ [kg]	1,726	1,730	2,041	1,572	1,886	
Breakout force at pivot pin ¹⁾ [kg]	1,912	1,975	2,236	1,986	2,241	
Bucket rollback force at maximum height ¹⁾ [kg]	1,293	1,333	1,870	1,333	1,869	
Bucket rollback force at ground level ¹⁾ [kg]	1,370	1,308	2,063	1,268	2,15	
CYCLE TIME						
Raising time [sec.]	3.8	2.9	3.5	2.9	3.5	
Lowering time [sec.]	2.5	1.9	2.2	1.9	2.2	
Bucket dumped time from crowded position at max height [sec.]	1.9	1.4	1.4	1.4	1.4	
Bucket Rollback time at ground level [sec.]	1.1	0.8	1.4	0.8	1.4	
FEATURES						
Loader ready frame ²⁾	•	•	•	•	•	•
3rd hydraulic function	•	•	•	•	•	•
MACH2® (for 3rd function implement coupling)	•	•	•	•	•	•
4th hydraulic function	○	•	•	•	•	•
MACH2® (for 4th function implement coupling)	○	•	•	•	•	•
SHOCK ELIMINATOR® System	•	•	•	•	•	•
Electrical On / Off switch Shock Eliminator	•	•	•	•	•	•
MACH System®	•	•	•	•	•	•
FITLOCK2+ System®	•	•	•	•	•	•
EURO QUICK ATTACH IMPLEMENT CARRIER	•	•	•	•	•	•
MX QUICK ATTACH IMPLEMENT CARRIER	○	•	•	•	•	•
OTHER QUICK OPTIONS: MX – EURO, EURO – SMS, MX – FAUCHEUX WHITE, EURO – TENIAS, EURO - SIGMA 4	○	•	•	•	•	•
FAST-LOCK System® (for EURO or MX QUICK ATTACH)	○	•	•	•	•	•
AUTO-UNLOAD System®	○	•	•	•	•	•
PCH SYSTEM® - Hydraulic self-levelling system	•	•	•	•	•	•
Mechanic self-levelling (MSL)	-	-	-	-	-	-
CONFIGURATION						
Model used to collect data	Farmall 65C	Farmall 100A	Farmall 100A	Farmall 120 C Selection	Farmall 120 C Selection	
Front tyres	11.2 R24	440 / 65 R25	440 / 65 R25	380 / 70R28	380 / 70R28	
Rear tyres	420 / 85 R30	504 / 65R35	504 / 65R35	480 / 70R38	480 / 70R38	
Required counterweight to meet EN 12525 safety standard	1,192	639	1,048	595	1,003	

¹⁾ According to ASABE S301.5

²⁾ Factory installed or with front loader option for dealer installation

• Standard

○ Optional

- Not available

		HIGHEST RATED FRONT AXLE			
FARMALL C SELECTION	FARMALL C SELECTION	FARMALL C ADVANCED	FARMALL C ADVANCED	FARMALL C ADVANCED	FARMALL C ADVANCED
100 - 120	100 - 120	90 - 120	90 - 120	90 - 120	90 - 120
L3920T	L4020T	L3814T	L3917T	L3920T	L4020T
Hydraulic self-levelling	Hydraulic self-levelling	Hydraulic self-levelling	Hydraulic self-levelling	Hydraulic self-levelling	Hydraulic self-levelling
190	190	190	190	190	190
3,874	3,971	3,786	3,829	3,829	3,927
3,592	3,689	3,504	3,547	3,547	3,645
2,982	3,079	2,894	2,937	2,937	3,035
972	915	1,036	1,049	1,049	991
57	57	57	57	57	57
2,421	2,572	2,370	2,508	2,508	2,654
50	51	44	45	45	46
212	252	212	262	262	302
2,188	2,129	1,446	1,807	2,138	2,081
2,247	2,150	1,734	2,046	2,404	2,311
2,635	2,509	2,007	2,267	2,665	2,535
1,869	1,859	1,350	1,894	1,894	1,882
2,015	2,061	1,274	2,023	2,023	2,068
4.1	4.0	3.8	4.7	5.4	5.4
2.4	2.0	2.5	2.9	3.2	3.2
2.0	2.0	1.9	1.9	2.7	2.7
1.4	1.0	1.1	1.9	1.9	1.9
•	•	•	•	•	•
•	•	•	•	•	•
•	•	•	•	•	•
•	•	○	○	○	○
•	•	○	○	○	○
•	•	•	•	•	•
•	•	○	○	○	○
•	•	•	•	•	•
•	•	•	•	•	•
•	•	•	•	•	•
•	•	○	○	○	○
•	•	○	○	○	○
•	•	○	○	○	○
•	•	•	•	•	•
-	-	-	-	-	-
Farmall 120 C Selection	Farmall 120 C Selection	Farmall 90C	Farmall 90C	Farmall 90C	Farmall 90C
380 / 70R28	380 / 70R28	340 / 85 R24	340 / 85 R24	340 / 85 R24	340 / 85 R24
480 / 70R38	480 / 70R38	420 / 85 R34	420 / 85 R34	420 / 85 R34	420 / 85 R34
1,408	1,403	735	1,151	1,564	1,558

MODEL	LUXXUM	LUXXUM	LUXXUM	LUXXUM
	100 -120	100 -120	100 -120	100 -120
	L3814T	L3917T	L3920T	L4020T
Self-levelling type	Hydraulic self-levelling	Hydraulic self-levelling	Hydraulic self-levelling	Hydraulic self-levelling
Loader working pressure [bar]	200	200	200	200
LIFT HEIGHTS				
A: Maximum lift height at implement pivot pin ¹⁾ [mm]	3,786	3,829	3,829	3,927
B: Maximum lift height under horizontal bucket ¹⁾ [mm]	3,504	3,547	3,547	3,645
C1: Clearance under dumped bucket at max dumped angle [mm]	2,894	2,937	2,937	3,035
D1: Maximum reach at lift height / tyres (bucket at 45° dumped position) [mm]	1,036	1,049	1,049	991
WORKING ANGLES				
E: Maximum dumped angle ¹⁾ [°]	57	57	57	57
F: Reach with bucket on ground ¹⁾ [mm]	2,370	2,508	2,508	2,654
G: Maximum rollback angle ¹⁾ at ground level [°]	44	45	45	46
DIGGING DEPTH				
H: Digging depth ¹⁾ [°]	212	262	262	302
LIFTING CAPACITY				
Lift capacity to maximum height - at implement pivot ¹⁾ [kg]	1,446	1,807	2,138	2,081
Lift capacity to 1.5 m height - at pivot point ¹⁾ [kg]	1,734	2,046	2,404	2,311
Breakout force at pivot pin ¹⁾ [kg]	2,007	2,267	2,665	2,535
Bucket rollback force at maximum height ¹⁾ [kg]	1,350	1,894	1,894	1,882
Bucket rollback force at ground level ¹⁾ [kg]	1,274	2,023	2,023	2,068
CYCLE TIME				
Raising time [sec.]	3.8	4.7	5.4	5.4
Lowering time [sec.]	2.5	2.9	3.2	3.2
Bucket dumped time from crowded position at max height [sec.]	1.9	1.9	2.7	2.7
Bucket Rollback time at ground level [sec.]	1.1	1.9	1.9	1.9
FEATURES				
Loader ready frame ²⁾	•	•	•	•
3rd hydraulic function	•	•	•	•
MACH2® (for 3rd function implement coupling)	•	•	•	•
4th hydraulic function	○	○	○	○
MACH2® (for 4th function implement coupling)	○	○	○	○
SHOCK ELIMINATOR® System	•	•	•	•
Electrical On / Off switch Shock Eliminator	○	○	○	○
MACH System®	•	•	•	•
FITLOCK2+ System®	•	•	•	•
EURO QUICK ATTACH IMPLEMENT CARRIER	•	•	•	•
MX QUICK ATTACH IMPLEMENT CARRIER	○	○	○	○
OTHER QUICK OPTIONS: MX – EURO, EURO – SMS, MX – FAUCHEUX WHITE, EURO – TENIAS, EURO - SIGMA 4	○	○	○	○
FAST-LOCK System® (for EURO or MX QUICK ATTACH)	○	○	○	○
AUTO-UNLOAD System®	○	○	○	○
PCH SYSTEM® - Hydraulic self-levelling system	•	•	•	•
Mechanic self-levelling (MSL)	-	-	-	-
CONFIGURATION				
Model used to collect data	Luxxum 120	Luxxum 120	Luxxum 120	Luxxum 120
Front tyres	340 / 85 R28	340 / 85 R28	340 / 85 R28	340 / 85 R28
Rear tyres	420 / 85 R38	420 / 85 R38	420 / 85 R38	420 / 85 R38
Required counterweight to meet EN 12525 safety standard	735	1,151	1,564	1,558

VESTNUM CVXDRIVE	VESTNUM CVXDRIVE	VESTNUM CVXDRIVE	VESTNUM CVXDRIVE	
	100 -130	100 -130	100 -130	
	L3917T	L3920T	L4020T	
Self-levelling type	Hydraulic self-levelling	Hydraulic self-levelling	Hydraulic self-levelling	
Loader working pressure [bar]	200	200	200	
LIFT HEIGHTS				
A: Maximum lift height at implement pivot pin ¹⁾ [mm]	3,848	3,848	3,945	3,945
B: Maximum lift height under horizontal bucket ¹⁾ [mm]	3,566	3,566	3,663	3,663
C1: Clearance under dumped bucket at max dumped angle [mm]	2,960	2,960	3,057	3,057
D1: Maximum reach at lift height / tyres (bucket at 45° dumped position) [mm]	1,044	1,044	988	988
WORKING ANGLES				
E: Maximum dumped angle ¹⁾ [°]	56	56	56	56
F: Reach with bucket on ground ¹⁾ [mm]	2,448	2,448	2,595	2,595
G: Maximum rollback angle ¹⁾ at ground level [°]	51	51	52	52
DIGGING DEPTH				
H: Digging depth ¹⁾ [°]	237	237	277	277
LIFTING CAPACITY				
Lift capacity to maximum height - at implement pivot ¹⁾ [kg]	1,974	2,333	2,270	2,646
Lift capacity to 1.5 m height - at pivot point ¹⁾ [kg]	2,173	2,552	2,453	2,845
Breakout force at pivot pin ¹⁾ [kg]	2,374	2,789	2,656	3,082
Bucket rollback force at maximum height ¹⁾ [kg]	1,976	1,976	1,965	2,422
Bucket rollback force at ground level ¹⁾ [kg]	2,157	2,157	2,204	2,713
CYCLE TIME				
Raising time [sec.]	4.7	5.4	5.4	6.2
Lowering time [sec.]	2.9	3.2	3.2	4.0
Bucket dumped time from crowded position at max height [sec.]	1.9	2.7	2.7	2.7
Bucket Rollback time at ground level [sec.]	1.9	1.9	1.9	2.5
FEATURES				
Loader ready frame ²⁾	•	•	•	•
3rd hydraulic function	•	•	•	•
MACH2® (for 3rd function implement coupling)	•	•	•	•
4th hydraulic function	○	○	○	○
MACH2® (for 4th function implement coupling)	○	○	○	○
SHOCK ELIMINATOR® System	•	•	•	•
Electrical On / Off switch Shock Eliminator	○	○	○	○
MACH System®	•	•	•	•
FITLOCK2+ System®	•	•	•	•
EURO QUICK ATTACH IMPLEMENT CARRIER	•	•	•	•
MX QUICK ATTACH IMPLEMENT CARRIER	○	○	○	○
OTHER QUICK OPTIONS: MX – EURO, EURO – SMS, MX – FAUCHEUX WHITE, EURO – TENIAS, EURO - SIGMA 4	○	○	○	○
FAST-LOCK System® (for EURO or MX QUICK ATTACH)	○	○	○	○
AUTO-UNLOAD System®	○	○	○	○
PCH SYSTEM® - Hydraulic self-levelling system	•	•	•	•
Mechanic self-levelling (MSL)	-	-	-	-
CONFIGURATION				
Model used to collect data	Vestrum 120 CVX	Vestrum 120 CVX	Vestrum 120 CVX	Vestrum 120CVX
Front tyres	340 / 85 R28	340 / 85 R28	340 / 85 R28	340 / 85 R28
Rear tyres	420 / 84 R38	420 / 84 R38	420 / 84 R38	420 / 85 R38
Required counterweight to meet EN 12525 safety standard	745	1,153	1,146	1,576

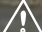
¹⁾ According to ASABE S301.5
²⁾ Factory installed or with front loader option for dealer installation
• Standard
○ Optional
- Not available

HIGHEST RATED FRONT AXLE				
MAXXUM	MAXXUM	MAXXUM	MAXXUM	MAXXUM
115 - 150	115 - 150	115 - 150	115 - 150	115 - 150
L4020T	L4023T	L4223T	L4225T	L4522T
Hydraulic self-levelling	Hydraulic self-levelling	Hydraulic self-levelling	Hydraulic self-levelling	Hydraulic self-levelling
210	210	210	210	210
4,021	4,021	4,129	4,129	4,566
3,739	3,739	3,847	3,847	4,284
3,133	3,133	3,241	3,241	3,678
1,042	1,042	960	960	604
56	56	56	56	56
2,397	2,397	2,533	2,533	2,631
51	51	51	51	50
206	206	232	232	209
2,366	2,757	2,666	3,076	2,565
2,610	3,026	2,895	3,324	2,708
2,842	3,296	3,119	3,583	2,861
2,093	2,578	2,532	2,532	2,399
2,247	2,765	2,839	2,839	2,891
5.4	6.2	6.2	7.0	6.4
3.2	4.0	4.0	4.8	4.1
2.7	2.7	3.3	3.3	3.3
1.9	2.5	2.5	2.5	2.5
•	•	•	•	•
•	•	•	•	•
•	•	•	•	•
○	○	○	○	○
○	○	○	○	○
•	•	•	•	•
○	○	○	○	○
•	•	•	•	•
•	•	•	•	•
•	•	•	•	•
○	○	○	○	○
○	○	○	○	○
○	○	○	○	○
○	○	○	○	○
•	•	•	•	•
-	-	-	-	-
Maxxum 135 CVX	Maxxum 135 CVX	Maxxum 135 CVX	Maxxum 135 CVX	Maxxum 135 CVX
480 / 65 R28	480 / 65 R28	480 / 65 R28	480 / 65 R28	480 / 65 R28
600 / 65 R38	600 / 65 R38	600 / 65 R38	600 / 65 R38	600 / 65 R38
760	1,182	1,135	1,588	1,047

PUMA	PUMA	PUMA	PUMA	PUMA
140 - 165	140 - 165	140 - 165	140 - 165	185 - 240
L4223T	L4225T	L4522T	L4627T	L4727T
Hydraulic self-levelling	Hydraulic self-levelling	Hydraulic self-levelling	Hydraulic self-levelling	Hydraulic self-levelling
210	210	210	210	210
4,132	4,132	4,575	4,598	4,680
3,850	3,850	4,293	4,316	4,398
3,240	3,240	3,683	3,706	3,797
1,008	1,008	652	619	1,001
57	57	57	57	55
2,522	2,522	2,617	2,617	2,492
50	50	49	49	45
237	237	214	214	172
2,594	2,994	2,486	3,261	2,918
2,900	3,330	2,714	3,513	3,571
3,167	3,639	2,901	3,763	4,009
2,570	2,570	2,434	2,917	3,083
2,797	2,797	2,852	3,415	3,147
6.2	7.0	6.4	8.2	8.2
4.0	4.8	4.1	5.9	5.9
3.3	3.3	3.3	3.8	3.8
2.5	3.0	2.5	2.7	2.7
•	•	•	•	•
•	•	•	•	•
•	•	•	•	•
○	○	○	○	○
○	○	○	○	○
•	•	•	•	•
○	○	○	○	○
•	•	•	•	•
•	•	•	•	•
•	•	•	•	•
○	○	○	○	○
○	○	○	○	○
○	○	○	○	○
○	○	○	○	○
•	•	•	•	•
-	-	-	-	-
Puma 175 CVX	Puma 175 CVX	Puma 175 CVX	Puma 175 CVX	Puma 185 CVX
14.9 R28	14.9 R28	14.9 R28	14.9 R28	600 / 65 R28
18.4 R38	18.4 R38	18.4 R38	18.4 R38	650 / 65 R42
1,057	1,512	967	1,871	1,148



   
caseih.com

 Free phone: 00 800 22 73 44 00

Safety never hurts! Always read the Operator's Manual before working with any equipment. Inspect equipment before using it, and be sure it is operating properly. Follow the product safety signs, and use any safety features provided. This literature has been published for worldwide circulation. The standard and optional equipment and the availability of individual models may vary from one country to the next. Case IH reserves the right to undertake modifications without prior notice to the design and technical equipment at all times without this resulting in any obligation whatsoever to make such modifications to units already sold. Whilst every effort is made to ensure that the specifications, descriptions and illustrations in this brochure are correct at the time of going to press, these are also subject to change without prior notice. Illustrations may show optional equipment or may not show all standard equipment. Case IH recommends **AKCELA** lubricants.

TP01 / SM / 09.22 / Printed in Austria - Cod.No. 22C1001COMINB

CASE IH